



BETH SYDD 'MLAEN | WHAT'S ON

MWLDAN

AWST - TACHWEDD

AUGUST - NOVEMBER 2024

CYNNWYS CONTENTS

3

Lleisiau Eraill Aberteifi 2024
Other Voices Cardigan 2024

15

Sioeau Byw Live Shows

29

Darllediadau Broadcasts

35

Sinema Cinema

54

Grwpiau &
Dosbarthiadau Cymunedol
Community Groups
& Classes

56

Gwybodaeth Gyffredinol
General Information

58

Dyddiadur Diary

Delwedd y clawr / Cover Image:
Kiri Pritchard-McLean
Tudalen / Page 17.

Annwyl gyfeillion,

Croeso cynnes i chi gyd i'n rhaglen newydd sy'n cwmpasu ein rhaglen ffilmiau o fis Awst i fis Tachwedd, ynghyd â digwyddiadau byw sydd ar y gweill i mewn i 2025. Wrth i ni nesáu at yr hydref, mae gennym raglen lawn dop i chi ei mwynhau.

Mae gennym ni gomedi gan y rhyfeddol Mark Watson a'r ffantastig Kiri Pritchard-McLean; rydyn ni'n dathlu pen-blwydd y Mugenkyo nerthol yn 30 oed; ac mae gennym ddwy sioe wych i blant a'u teuluoedd wrth i ni groesawu *There's A Monster In Your Show*, a ffefryn pawb, *The Gruffalo*.

Hefyd, mae tocynnau ar gyfer *Cinderella*, panto Cardigan Theatre, ar werth nawr, ac rydyn ni'n cyfrif y dyddiau nes bod Lleisiau Eraill yn dychwelyd i Aberteifi o 31ain Hydref gyda lein-yp anhygoel o gerddoriaeth a thrafodaeth o Iwerddon, Cymru a thu hwnt.

Yn ogystal, mae Cymdeithas Ffilm Theatr Mwldan yn cychwyn eu tymor newydd. Mae yna hefyd sinema digwyddiadau byw hynod gyffrous ar y gweill, o Jodie Comer yn dychwelyd yn *Prima Facie* gan y National Theatre, i ail-ddehongliad dawns Matthew Bourne o'r clasur *Edward Scissorhands*. Ac, unwaith eto, rhaglen llawn dop o ffilmiau, o deitlau prif frwd i rai o oreuon sinema indi.

Fel bob amser, eich cefnogaeth chi sy'n ein galluogi ni i gadw ati i gyflwyno'r rhaglen anhygoel hon ar garreg eich drws; fydden ni ddim yma heboch chi!

Gyda dymuniadau gorau,

Dilwyn Davies
Prif Weithredwr, Mwldan

Dear Friends,

A warm welcome to you all to our new programme which covers our film programme from August to November, plus upcoming live events into 2025. As we head towards the autumn, there's a packed line up for you to enjoy.

We have comedy from the fabulous Mark Watson and glorious Kiri Pritchard-McLean; we're celebrating the 30th birthday of the mighty Mugenkyo; and we have two fabulous shows for children and their families as we welcome *There's A Monster In Your Show*, and everyone's favourite, *The Gruffalo*.

Tickets for Cardigan Theatre's panto *Cinderella* are also now on sale, and we're counting the days until *Other Voices* returns to Aberteifi from 31st October with an amazing line-up of music and discussion from Ireland, Wales and beyond.

Theatr Mwldan Film Society also kick off their new season. There's also some really exciting live event cinema coming up, from Jodie Comer's return in *Prima Facie* from the National Theatre, to Matthew Bourne's dance reimagining of the classic *Edward Scissorhands*. And, as always, a packed film programme, from mainstream releases to some gems from indie cinema.

As always, your support is what keeps us able to deliver this amazing programme on your doorstep; we wouldn't be here without you!

With best wishes,

Dilwyn Davies,
Chief Executive, Mwldan



Yn fyw ac Ar-lein / Live & Online

OTHER VOICES CARDIGAN



LLEISIAU ERAILL ABERTEIFI

31.10.24 — 02.11.24

Tocynnau ar werth / Tickets on sale

Eglwys y Santes Fair / St Mary's Church

Bill Ryder-Jones / Fabiana Palladino / Georgia Ruth

Llwybr Cerdd / Music Trail

ADJUA / Big Sleep / Chubby Cat / Cynefin / David Kitt / Don Leisure / DUG / Eoghan Ó Ceannabháin / Fears / Filmore! / Gillie / girlfriend. / Lila Zing / Lleuwen / Megan Nic Ruairí / Melin Melyn / Minas / Minas presents Niques, Em Koko & Po Griff / M(h)aol / Morgana / Mr Phormula / New Jackson / Niamh Bury / OLIVE HATAKE / Otto Aday / PARCS / People and Other Diseases / Phil Kieran / Rona Mac / Sage Todz / Search Results / Skunkadelic / Slate / Tara Bandito / The Family Battenberg / The Gentle Good / Tiny Leaves / Virgins

Clebran

Billy Mag Fhloinn / Carwyn Graves / Carys Eleri / Christopher Kissane / Darren Chetty / Delyth Jewell / Diarmait Mac Giolla Chríost / Edwina Guckian / Hannah Quinn-Mulligan / James Dovey / Laura McAllister / Lowri Cunnington Wynn / Marianne Kennedy / Noel Mooney / The Dingle Druid, Julí Ní Mhaoileóin / Tumi Williams / Max Zanga

Nifer mwy i'w cyhoeddi / Many more to be announced



Other Voices Cardigan / Lleisiau Eraill Aberteifi

Yn 2024 bydd Lleisiau Eraill Aberteifi yn dathlu ei phumed flwyddyn! Bob blwyddyn rydym yn adeiladu ar hud y blynyddoedd blaenorol i wneud yr ŵyl nesaf ein gorau eto; penwythnos gwych o gerddoriaeth ogoneddus, cyfeillgarwch a hwyl, yn llenwi pob twll a chornel yn y rhan arbennig iawn hon o Gymru. Eleni, byddwn yn lansio ap gŵyl Lleisiau Eraill er mwyn i chi gael gwybodaeth am artistiaid eleni a chynllunio amserlen eich gŵyl ymlaen llaw, gyda'r holl wybodaeth ddiweddaraf am raglenni ar flaenau eich bysedd.

Ochr yn ochr â set serol o brif actau'r Eglwys a lein-yp gwefreiddiol arall ar y Llwybr Cerdd ar hyd a lled y dref dros y tair noson, bydd Clebran yn dychwelyd i'r Mwldan, gan gynnwys llu o leisiau hynod ddiddorol yn amrywio o dderwyddon i bêl-droedwyr. Newydd ar gyfer eleni, bydd Clebran ar hyd y Llwybr yn cyflwyno sgysiaau agos atoch â cherddorion yn lleoliadau'r Llwybr Cerdd, a bydd adeilad hanesyddol a thrawiadol Capel Bethania yn ymuno â'r ŵyl fel lleoliad Llwybr Cerdd am y tro cyntaf.

2024 sees Other Voices Cardigan celebrate its fifth year! Each year we build on the magic of previous years to make the next festival our best yet; an epic weekend of glorious music, friendship and fun, packed into every nook and cranny of this very special pocket of Wales. This year, we'll be launching the Other Voices festival app so that you can check out this year's artists and plan your festival schedule in advance, with all the latest programme information at your fingertips.

Alongside a stellar set of Church headliners and another thrilling Music Trail line-up across town over the three nights, Clebran will return to Mwldan, featuring a flavoursome array of voices spanning from druids to footballers. New for this year, **Clebran on the Trail** will bring intimate conversations with musicians at Music Trail venues, and the stunning historic building of Bethania Chapel will be joining the festival as a Music Trail venue for the first time.

Strands



Eglwys y Santes Fair /
St Mary's Church



Llwybr Cerdd /
Music Trail



Clebran



Clebran ar hyd y Llwybr /
Clebran on the Trail



Eglwys y Santes Fair / St Mary's Church

Unwaith eto byddwn yn llenwi Eglwys y Santes Fair â seiniau rhai o leisiau mwyaf disglair cerddoriaeth. Bydd prif berfformiadau agos-atoch gan Bill Ryder-Jones, Fabiana Palladino, Georgia Ruth a mwy yn cael eu darlledu i'r byd ar YouTube a'u ffrydio'n fyw i'r Mwldan dros y penwythnos gyda thocynnau aur cyfyngedig ar gael i'w hennill drwy rafflau a chystadlaethau'n unig.

Dilynwch @othervoiceslive a @theatrmwldan am y wybodaeth ddiweddaraf ar sut i fachu eich band arddwrn chi!

We'll once again be filling St Mary's Church with the sounds of some of the brightest voices in music. Intimate headline performances by Bill Ryder-Jones, Fabiana Palladino, Georgia Ruth and more will be beamed to the world on YouTube and streamed live to Mwldan over the weekend with limited golden tickets up for grabs only through draws and competitions.

Follow @othervoiceslive and @theatrmwldan for the latest info on how to nab yours!





Bill Ryder-Jones

Lleolir caneuon hamddenol Bill Ryder-Jones yn y man lle mae mewnsyllu ac achubiaeth yn cwrdd, er bod ei themâu telynegol yn awgrymu nad oes modd sicrhau ateb bob tro. Mae Ryder-Jones wedi meistroli cerddoriaeth naws unigryw a phersonol, wedi'i pherfformio gyda deheurwydd stiwdio ac agosatrwydd yn ei gyflwyno lleisiol - sain rhywun yn rhannu ei brofiadau wrth gynnig gofod i'r gwrandawr fod yn nhw eu hunain.

The languorous songs of Bill Ryder-Jones are located at the point where introspection and redemption meet, although his lyrical themes suggest resolution is not always guaranteed. Ryder-Jones has mastered a distinct and personal mood music, executed with a studio deftness and an intimacy in his vocal delivery - the sound of someone sharing their experiences while offering the listener a space to be themselves. At Other Voices, Ryder-Jones eschews the maximalist approach of recent tours, appearing with cellist and vocalist Evelyn Halls.



Fabiana Palladino

Cantores, ysgrifennwr caneuon, a chynhyrchydd sy'n chwarae amryw o offerynnau yw Fabiano Palladino o'r DU. Mae hi wedi rhagori ar ddisgwyliadau gyda'i halbwm debut hyd llawn 10 trac o seiniau sonig newidiol sy'n tynnu ysbrydoliaeth o gynrychiadau stiwdio mawr R&B, Soul, Pop a Disgo yr 80au a'r 90au ac yn eu hidlo trwy lens fodern.

Fabiana Palladino is a UK vocalist, songwriter, multi-instrumentalist, and producer, who has transcended expectations with her 10-track full-length debut album of shapeshifting sonics that draws inspiration from the big R&B, Soul, Pop and Disco studio productions of the 80s and 90s and filters them through a modern lens.



Georgia Ruth

Cerddor o Aberystwyth yw Georgia Ruth. Gan ddefnyddio dylanwadau gwerin i greu sain wirioneddol unigryw, enillodd ei halbwm cyntaf y Wobr Gerddoriaeth Gymreig yn 2013 a chafodd ei henwebu ar gyfer dwy Wobr Werin BBC Radio 2. Cydweithiodd Georgia â Manic Street Preachers ar eu halbwm Futurology (a gyrhaeddodd #2 yn Siartiau Albymau Swyddogol y DU). Yn 2024 rhyddhawyd pedwerydd albwm stiwdio Georgia, Cool Head, casgliad didwyll a dylanwadol o ganeuon, sy'n rhychwantu pob dim o ehangder Americana i faledi gwerin ag arnynt ddylanwad y 60au. Mae Georgia yn ei ddisgrifio fel taith hir drwy'r nos ac i mewn i'r bore.

Georgia Ruth is a musician from Aberystwyth. Using folk influences to create a truly unique sound, her debut album won the Welsh Music Prize in 2013 and was nominated for two BBC Radio 2 Folk Awards. Georgia collaborated with Manic Street Preachers on their Futurology album (reaching #2 in the Official UK Album Charts). 2024 saw the release of Georgia's fourth studio album – Cool Head. Taking its name from a phrase her dad would always use to urge calm thinking, the album presents a candid and affecting collection of songs, spanning wide-open Americana to 60s-influenced folk ballads. Georgia describes it as a long drive through night into morning.



Llwybr Cerdd / Music Trail



Archebwch nawr /
Book now

Dros y penwythnos bydd lleisiau newydd mwyaf disglair cerddoriaeth yn perfformio yn nhref Aberteifi ar hyd Llwybr Cerdd ffrwydrol arall. O bop-hyper i roc-syrff i shoegaze a mwy, gallwch wyllo dros 80 o setiau byw ar draws y penwythnos gan eich hoff fandiau ac artistiaid newydd o Gymru ac Iwerddon.

Mae bandiau arddwrn Llwybr Cerdd ar gyfer y Penwythnos ar werth nawr am £50* yn unig.

*I weld popeth sy'n cael ei gynnwys gyda'r band arddwrn, gweler t.12

Across the weekend music's brightest new voices will take over the town of Cardigan for another dynamite Music Trail. From hyper-pop to surf-rock via shoegaze and more, you can catch over 80 live sets across the weekend from your new favourite bands and artists from Wales and Ireland.

Weekend Music Trail wristbands are on sale now for just £50*.

*To see everything included in the wristband, see p.12

ADJUA / Big Sleep /
Chubby Cat / Cynefin /
David Kitt / Don Leisure /
DUG / Eoghan Ó
Ceannabháin / Fears /
Filmore! / Gillie /
girlfriend. / Lila Zing /
Lleuwen / Megan Nic
Ruairí / Melin Melyn /
Minas / Minas presents
Niques, Em Koko & Po Griff /
M(h)aol / Morgana /
Mr Phormula /
New Jackson / Niamh
Bury / OLIVE HATAKE /
Otto Aday / PARCS /
People and Other Diseases /
Phil Kieran / Rona Mac /
Sage Todz / Search
Results / Skunkadelic /
Slate / Tara Bandito /
The Family Battenberg /
The Gentle Good /
Tiny Leaves / Virgins

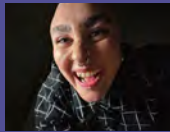
Nifer mwy i'w cyhoeddi /
Many more to be announced



ADJUA



Big Sleep



Chubby Cat



Cynefin



David Kitt



Don Leisure



DUG



Em Koko



Eoghan Ó
Ceannabháin



Fears



Filmore!



Gillie



girlfriend.



Lila Zing



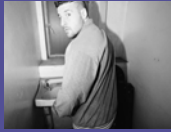
Lleuwen



Megan
Nic Ruairí



Melin Melyn



Minas



M(h)aol



Morgana



Mr Phormula



New Jackson



Niamh Bury



Niques



OLIVE
HATAKE



Otto Aday



PARCS



People and
Other Diseases



Phil Kieran



Po Griff



Rona Mac



Sage Todz



Search
Results



Skunkadelic



Slate



Tara Bandito



The Family
Battenberg



The Gentle
Good



Tiny Leaves



Virgins



Clebran

Ar y Groesfordd Lle Mae
Ysbrydion yn Cwrdd /
At The Crossroads,
Where Spirits Gather

Mae Clebran yn dychwelyd i'r Mwldan fel rhan o Lleisiau Eraill Aberteifi, gyda thrafodaethau a pherfformiadau yn digwydd dros dridiau'r wyl. Bydd amrywiaeth gyffrous o leisiau cerddorion ac artistiaid, derwyddon a llên-gwerinwyr, gwleidyddion ac athrawon, awduron, newyddiadurwyr, gweithwyr proffesiynol maes pêl-droed, dawnsywyr a ffermwyr yn ymuno â ni i lywio sgysysau ynghylch cymuned, cyd-dynnu, traddodiadau a defodau...

Byddwn yn agor gyda chynulliad hynod arbennig o dderwyddon i nodi Nos Calan Gaeaf/Samhain ar Nos Galan Gaeaf. Bydd Derwydd Dingle, Julí Ní Mhaoileóin yn ymuno â'r Derwydd o Gymru Carys Eleri i berfformio defod sy'n dathlu ein chwaer genhedloedd yn dod at ei gilydd. Ceir sgwrs i gyd-fynd â hyn, lle bydd y llên-gwerinwr Dr Billy Mag Fhloinn yn ymuno â'r derwyddon: Y Paganïaid Newydd.

Yn y sesiwn Mewn Undod Mae Nerth, mae Delyth Jewell AS, yr Athro Diarmait Mac Giolla Chrïost, ac academydd theatr Marianne Kennedy yn ymuno â'r hanesydd a'r awdur Christopher Kissane i archwilio ailfeithrin cysylltiadau hynafol ar draws Môr Iwerddon yn wyneb byd ôl-Brexit. Am beth allwn ni obeithio? Mae Prif Weithredwr Cymdeithas Bêl-

droed Cymru Noel Mooney ac Is-lywydd UEFA / cyn bêl-droediwr rhyngwladol Laura McAllister yn ymuno â'r ysgrifennwr/cyflwynydd Darren Chetty i siarad am ymgyrchu a chyd-dynnu cymunedol ym maes pêl-droed, y tu hwnt i ffiniau'r cae yn You'll Never Walk Alone.

Man Gwyn Man Draw? yw'r cwestiwn sydd gan Christopher Kissane i'w drafod gyda'i westeion, y darlithydd Dr Lowri Cunnington Wlynn, cyfarwyddwr creadigol Blueprint James Dovey a'r dawnsiwr a'r ffermwr Edwina Guckian, a fydd hefyd yn rhannu rhywfaint o ddawns gyda ni. Maen nhw'n trafod y weithred radical o aros yn yr unfan.

Mae Tir Cyffredin yn dod â lleisiau o bob ochr Môr Iwerddon at ei gilydd i drafod hanes cyfoethog ffermio a bwyd yn y ddau gyd-destun. Mae'r newyddiadurwr a'r ffermwr organig Hannah Quinn-Mulligan yn siarad â'r awdur a'r garddwr Carwyn Graves o dan fugeiliaeth hynaws yr ysgrifennwr hanes bwyd Christopher Kissane.

Yn y sesiwn Nawr yn Chwarae rydym yn holi Tumi Williams (Skunkadelic/Starving Artists) a Max Zanga (Filmore!/Tebi Rex) am y gwaith ysbrydoledig y maen nhw'n ei wneud ar y llwyfan ac oddi ar y llwyfan i hyrwyddo cerddoriaeth ddu yng Nghymru ac Iwerddon yn y drefn honno.

Clebran returns to Mwldan as part of Other Voices Cardigan, with discussions and performances taking place over the three days of the festival. An exciting array of voices from musicians and artists, druids and folklorists, politicians and professors, authors, journalists, football professionals, dancers and farmers join us to navigate conversations through community, collectivism, traditions and ritual...

We open with an incredibly special meeting of druids to mark Nos Calan Gaeaf/Samhain on Halloween eve. The Dingle Druid, Julí Ní Mhaoileóin, will join forces with Welsh druid Carys Eleri to perform a ceremony that marks the coming together of our sister nations. This will be accompanied by a conversation, in which the druids are joined by folklorist Dr. Billy Mag Fhloinn: **The New Pagans**.

In **Stronger Together**, Delyth Jewell MS, Professor Diarmait Mac Giolla Chriost and theatre academic Marianne Kennedy join historian and writer Christopher Kissane to explore the rekindling of ancient bonds across the Irish Sea in the face of a post-Brexit world. What can we hope for?

CEO of the Football Association of Wales
Noel Mooney and UEFA Vice President
/ former international footballer Laura

McAllister join writer/presenter Darren Chetty to talk about the activism and community collectivism of football, beyond the boundaries of the pitch in **You'll Never Walk Alone**.

Christopher Kissane asks why **The Grass Isn't Always Greener** with his guests, lecturer Dr Lowri Cunnington Wynn, creative director at Blueprint James Dovey and dancer and farmer Edwina Guckian, who will also share some dance with us. They discuss the radical act of staying put.

Common Ground brings together voices from either side of the Irish Sea to discuss the rich history of farming and food in both contexts. Journalist and organic farmer Hannah Quinn-Mulligan talks to author and gardener Carwyn Graves under the kind shepherding of food history writer Christopher Kissane.

In **Now Playing** we ask Tumi Williams (Skunkadelic/Starving Artists) and Max Zanga (Filmore!/Tebi Rex) about the inspiring work they do on and off stage to promote black music in Wales and Ireland respectively.

Yn newydd ar gyfer 2024, Clebran ar hyd y Llwybr. Trafodaethau agos-atoch â cherddorion mewn lleoliadau ar hyd y Llwybr. Manylion i'w cyhoeddi.

Mae band arddwrn Lleisiau Eraill yn rhoi mynediad i chi i holl drafodaethau Clebran a Clebran ar hyd y Llwybr (ar sail y cyntaf i'r felin).

New for 2024, Clebran on the Trail. Intimate discussions with musicians in venues across the Trail. Details to be announced.

An Other Voices wristband gives you access to all Clebran and Clebran Trail discussions (on a first come first served basis).

**Mewn partneriaeth ag /
In partnership with /
i gompháirt le Ireland's Edge**



Tocynnau a Gwybodaeth Bellach / Tickets & Information

Bandiau Arddwn

Mae bandiau arddwrn penwythnos yn rhoi mynediad i bob sioe ar hyd y Llwybr Cerdd trwy gydol y penwythnos, yn ogystal â holl drafodaethau Clebran a Clebran ar hyd y Llwybr. Mae nifer cyfyngedig o fandiau arddwrn i'r rheiny dan 18 ar gael am £10 yn unig. Trwy brynu band arddwrn, byddwch hefyd yn cael eich cynnwys yn awtomatig mewn rafflau am docynnau aur i berfformiadau agos-atoch yr Eglwys.

Sylwch, nid yw tocynnau Eglwys ar werth a phrynu band arddwrn ar gyfer y Llwybr Cerdd yw eich cyfle gorau i fachu pâr ar gyfer un o'r setiau agos-atoch yn yr Eglwys. Bydd tocynnau ychwanegol ar gael trwy gystadlaethau cyfryngau cymdeithasol.

Dilynwch @othervoiceslive a @theatrmwldan ar y cyfryngau cymdeithasol am gyfleoedd i ennill.

I gael manylion llawn am fandiau arddwrn yr ŵyl a ffrydio, ewch i mwldan.co.uk

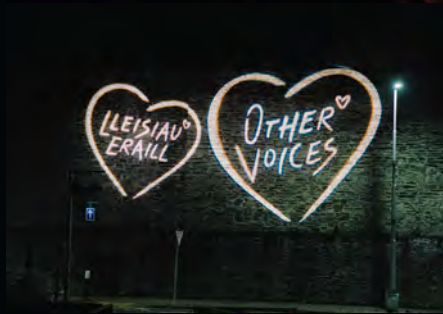
Wristbands

Weekend wristbands provide access to every show along the Music Trail throughout the weekend, as well as all Clebran and Clebran on the Trail discussions. A limited number of wristbands for under 18's are available at just £10. By purchasing a wristband, you'll also be automatically entered into prize draws for golden tickets to the intimate Church performances.

Please note, Church tickets are not for sale and booking a Music Trail wristband is your best chance to nab a pair for one of the intimate Church sets. Additional tickets will be available through social media competitions.

Follow @othervoiceslive and @theatrmwldan on social media for chances to win.

For full details on festival wristbands and streaming, visit mwldan.co.uk.



App

Lawrlwythwch Ap Lleisiau Eraill Aberteifi! Bydd ein Ap newydd gwych ar gyfer iOS ac Android yn eich helpu i gynllunio eich penwythnos Lleisiau Eraill, o ddod o hyd i'ch ffordd o gwmpas y lleoliadau i gael gwybodaeth am yr actau aruthrol eleni a chreu eich amserlen gŵyl eich hun gyda modd creu hysbysiadau atgoffa fel nad ydych chi'n colli dim. Byddwch hefyd yn derbyn unrhyw newidiadau i'r amserlen ar unwaith trwy ein hysbysiadau gwthio – ac efallai bydd ychydig o syrpreisys ar eich cyfer hefyd!

Ymunwch â'n e-restr neu dilynwch y cyfryngau cymdeithasol ar gyfer dyddiad lansio'r Ap.

Download the Other Voice Cardigan App! Our brilliant new App for iOS and Android will help you plan your OV weekend, from finding your way around the venues to checking out this year's hottest acts and creating your very own festival schedule with reminders so you don't miss a trick. You'll also receive any schedule amendments instantly via our push notifications – plus there may be a few surprises in store!

Join our e-list or follow on socials for the App launch date.

Ar-lein / Online

Tocynnau ar werth /
Tickets on sale
www.mwldan.co.uk
www.othervoices.ie

Dilynwch ni ar y cyfryngau cymdeithasol @OtherVoicesLive a @theatrmwldan a thanysgrifiwch i'n rhestrau postio drwy mwldan.co.uk neu othervoices.ie i gael y newyddion diweddaraf a diweddariadau ar **Lleisiau Eraill Aberteifi**.

Follow us on socials @OtherVoicesLive and @theatrmwldan and subscribe to our mailing lists via mwldan.co.uk or othervoices.ie for the latest news and updates on Other Voices Cardigan.

#OVC24



Archebwch nawr /
Book now

SOUTH
WIND
BLOWS



MWLDAN

TRIONGL

IRELAND'S
EDGE



All Rights Reserved. All Rights Reserved.
All Rights Reserved. All Rights Reserved.
All Rights Reserved. All Rights Reserved.

All Rights Reserved. All Rights Reserved.
All Rights Reserved. All Rights Reserved.
All Rights Reserved. All Rights Reserved.





**AMGUEDDFA
CYMRU**



MWLDAN

LLANTARNAM GRANGE

CRAFT FESTIVAL WALES / GŴYL GREFFT CYMRU

6-8 Medi | September CASTELL ABERTEIFI | CARDIGAN CASTLE

GŴyl Grefft arbrynn yn dod i Aberteifi!

Bydd GŴyl Grefft Cymru yn torri llwybr ar draws Aberteifi ar 6-8 Medi gan groesawu dros 80 o wneuthurwyr i Gastell Aberteifi. Bydd Tiroedd y Castell yn fwrwm o weithgareddau, yn cynnwys arddangosiadau, llwybr cerfluniau, arddangosfeydd, sgysiau, gweithdai, gweithgareddau i blant, bwydydd lleol, cerddoriaeth fyw, theatr grwydol a dweud storïau. A HEFYD, bydd Keith o'r The Pottery Throwdown a My Chapel Dream yn ymuno â ni dros y penwythnos.

O 30 Awst, bydd Llwybr Crefft y Dref, a gyflwynir gan Oriol Myrddin, yn defnyddio 6 lleoliad ar draws Aberteifi, yn cynnwys Mwldan, i arddangos gwaith newydd gan 6 gwneuthurwr datblygol o Gymru, a ysbrydolwyd gan wrthrychau yng Nghasgliad yr Amgueddfa Genedlaethol.

A hefyd, rhwng 6 Medi a 6 Hydref, cynhelir Significant Forms yn Oriol Canfas. Mae hon yn arddangosfa o gerameg o ansawdd Amgueddfa o bob rhan o Gymru a guradir gan y crochenydd lleol, Peter Bodenham.

Multi award-winning Craft Festival is coming to Cardigan!

Craft Festival Wales will blaze a trail across Cardigan from September 6-8 hosting over 80 makers at Cardigan Castle. The Castle Grounds will be heaving with activities including demonstrations, sculpture trails, exhibitions, talks, workshops, children's activities, local food, live music, walk-about theatre & storytelling. AND even Keith from The Pottery Throwdown and My Chapel Dream will be joining us over the weekend.

From August 30th The Town Craft Trail presented by Oriol Myrddin, will see 6 venues across Cardigan, including Mwldan, hosting new work by 6 emerging makers from Wales, inspired by objects from the National Museum Collection.

Also, Significant Forms hosted at Canfas Gallery, is an exhibition of museum-quality ceramics from across Wales curated by local potter, Peter Bodenham, will run from September 6th - October 6th.

Am fanylion llawn ewch i / For full details go to www.craftfestival.co.uk/wales



SIOEAU BYW LIVE SHOWS

WORDS ON TROUBLED WATERS

Darlleniad Barddoniaeth | Poetry Reading

Dydd Sadwrn 14 Medi | Saturday 14 September 1.30pm | Am ddim / Free

Galeri / Gallery

I gyd-fynd â sgwrs y Teifi Drwy Hen Ffotograffau, rydym yn falch iawn o gael darlleniadau gan gyfranwyr y flodeugerdd barddoniaeth, *Words On Troubled Waters*. Yr ysgrifenyddwyr hyn yw - Amanda Pickering, Ann Jay, Jackie Biggs, Jane Campbell, Josie Smith, Julia Angell, Kathy Miles, Kittie Belltree, Simone Mansell Broome a Sue Moules. Mae'r llyfr wedi'i olygu gan Simone Mansell Broome, (gyda darluniau clawr gan Ann Fletcher-Williams), a chaiff ei gyhoeddi eleni gan Lutra River Press.

To complement the Teifi In Old Photographs talk, we are delighted to have readings from the contributors of the poetry anthology, *Words On Troubled Waters*. These writers are - Amanda Pickering, Ann Jay, Jackie Biggs, Jane Campbell, Josie Smith, Julia Angell, Kathy Miles, Kittie Belltree, Simone Mansell Broome and Sue Moules. The book has been edited by Simone Mansell Broome, (with cover illustrations by Ann Fletcher-Williams), and published this year by Lutra River Press. All profits from sales of the book are being donated to local environmental charities.

Digwyddiad am ddim, does dim angen tocyn | Free event, no ticket needed.

Y Teifi Mewn Hen Luniau: O Genarth i'r Môr The Teifi In Old Photographs: From Cenarth To The Sea Gyda / With Glen Johnson

Dydd Sadwrn 14 Medi | Saturday 14 September

2.00pm | £7

Mwldan 2

Oherwydd y galw mawr, dyma gyfle arall i weld taith Glen i lawr Afon Teifi mewn ffotograffau, y tro hwn ym Mwldan 2.

Glen Johnson sy'n cyflwyno detholiad o ffotograffau - llawer na welwyd erioed o'r blaen yn gyhoeddus - yn dangos afon Teifi o Genarth i'r môr. Mae'r delweddau'n dangos nid yn unig y ddyfrfordd ei hun, ond amrywiaeth eang o ddefnyddwyr yr afon, o gyryglwyr, pysgotwyr a physgotwyr rhwydi sân i longau hwylio, dynion bad achub a gwylwyr y glannau. Darganfyddwch hanes cudd yr afon a gweld y Teifi mewn golau newydd.

Due to popular demand, this is another chance to see Glen's journey down the Teifi in photographs, this time in Mwldan 2.

Glen Johnson presents a selection of photographs - many never before seen publicly - showing the Teifi from Cenarth to the sea. The images show not only the waterway itself, but a wide variety of river users, from coracle-men, anglers and seine-net fishermen to sailing ships, lifeboat men and coastguards. Discover the hidden history of the river and see the Teifi in a new light.

Cynhelir y sgwrs hon yn Saesneg | This talk will be in English.



SHERMAN THEATRE: IPHIGENIA YN SBLOT

Nos Fawrth 17 Medi | Tuesday 17 September 7.30pm
£15 / £12

Daw drama ryngwladol, arobryn a lwyddiannus Gary Owen yn fyw gydag addasiad newydd Gymraeg Branwen Cennard, wedi'i gyfarwyddo gan Alice Eklund. Ers ei pherfformiad cyntaf yn y Sherman yn 2015, mae *Iphigenia in Splott* wedi dod yn ffenomen theatrig a chlasur y theatr yng Nghymru. Gan barhau i syfrdanu, chwalu ac yn hynod o ddydol, mae *Iphigenia yn Sblot* yn ddrama sy'n atseinio i'r carn. Hon yw'r ddrama sydd wir ei hangen arnom ni gyd ar hyn o bryd.

Gary Owen's award-winning, international smash-hit is brought vividly to life in a new production by Alice Eklund of Branwen Cennard's adaptation in the Welsh language. Since its premiere at Sherman Theatre in 2015, *Iphigenia yn Splott* has become a theatrical phenomenon and a Welsh theatre classic. Startling, shattering and profoundly human, *Iphigenia yn Sblot* resonates deeply. This is the play we all need right now.

Caiff y sioe hon ei pherfformio yn Gymraeg (capsynau ar gael yn Saesneg)
This show will be performed in Welsh (captions available in English)
Ariennir gan Gyngor Celfyddydau Cymru | Funded by Arts Council of Wales



NOSWEITHIAU MEIC AGORED OPEN MIC NIGHTS

Nos Sul 22 Medi | Sunday 22 September
Nos Sul 20 Hydref | Sunday 20 October
Nos Sul 24 Tachwedd | Sunday 24 November
Galeri / Gallery | 8.00pm | Am ddim / Free

Wrth i'r nosweithiau ddechrau mynd ychydig yn hirach, mae gennym ni'r ffordd berffaith o ymlacio a chymdeithasu ar nos Sul. Mae ein nosweithiau meic agored misol yn gyfle perffaith i rannu eich cerddoriaeth, barddoniaeth, jôcs neu unrhyw ddarn perfformio arall gyda chynulleidfa gyfeillgar, neu jest i ddo i wrando ar yr hyn sydd gan eich cymuned greadigol leol i'w gynnig. Croeso i bawb, mynediad am ddim, cofrestrwch i berfformio wrth y drws.

As the nights begin to get a little longer, we have the perfect way to relax and socialise on a Sunday evening. Our monthly open mic nights are the perfect opportunity to share your music, poetry, jokes or any other performance piece with a friendly audience, or to just come and listen to what your local creative community has to offer. All welcome, free entry, sign up to perform on the door.

Am ddim / Free



KIRI PRITCHARD-MCLEAN: PEACOCK

Nos Fercher 2 Hydref | Wednesday 2 October

7.30pm

£16 (£14)

Ymunwch â chyd-luniwr a chyd-westeiwr y podlediad cwlt poblogaidd *All Killa No Filla* ar gyfer sioe lawen a dyrchafol gan ddirgrifwraig sy'n adnabyddus am wneud 'powerhouse stand-up from the thorniest of subjects' (The Guardian).

Join the co-creator and co-host of cult hit podcast *All Killa No Filla* for a joyous and uplifting show from a comedian known for making 'powerhouse stand-up from the thorniest of subjects' (The Guardian).

"Expect sequins, social commentary, and massive laughs from the renaissance woman of UK comedy" **Rolling Stone**

Yn Addas i 15+ | Suitable for 15+



ARÁN AGUS IM

Nos Iau 3 Hydref | Thursday 3 October

7.30pm

£15

Mae Arán Agus Im yn berfformiad theatraidd lle mae Manchán Magan yn pobi bara surdoes tra'n cynnig cipolwgi i ryfeddodau'r Wyddeleg – gan archwilio geiriau grymus y dirwedd, termau greddf a chraffer, a'r ymadroddion niferus sy'n dod â gogoniant dirgel ein byd naturiol yn fyw.

Mae'r sioe yn ddathliad o iaith, tir a bywd Gwyddelig lleol, gyda bara surdoes traddodiadol wedi'i bobï'n ffres i'r gynulleidfa ei dafellu a'i daenu â menyn y maen nhw'n ei gorddi eu hunain o hufen Iwerddon. (Nid oes angen deall Gwyddeleg.

Arán Agus Im is a theatrical performance in which Manchán Magan bakes sourdough bread while offering insights into the wonders of the Irish language – exploring potent words of landscape, terms of intuition and insight, and the many phrases that bring to life the mysterious glory of our natural world.

The show is a celebration of language, land and local Irish food, with freshly-baked traditional sourdough bread for the audience to slice and spread with butter they churn themselves from Irish cream. (Knowledge of Irish is not required).



CLWB MWLDAN: SONIC SOUNDS FROM PLANET EARTH

Nos Wener 4 Hydref | Friday 4 October 8.00pm - 1.00am
£6 in advance / £8 on the door

Mae Clwb Mwldan yn croesawu Sonic Sounds yn ôl am noson arall o seiniau byd-eang i wneud i chi symud! Ymunwch â Wibli Wobli, Tom la Bomba a My Friend Andy mewn dathliad o gerddoriaeth ddawns a rhythm byd-eang. Disgwylwch ddetholiad o diwniau sy'n rhychwantu'r genres gan gynnwys Cumbia, Afrobeat, High Life, Zouk, Funk, Disgo a mwy.

Sonic Sounds is back at Clwb Mwldan for another night of global grooves to make you move! Join Wibli Wobli, Tom la Bomba and My Friend Andy in a celebration of worldwide dance music and rhythm. Expect a genre spanning selection including Cumbia, Afrobeat, High Life, Zouk, Funk, Disco and more.



STEVE KNIGHTLEY

Nos Iau 10 Hydref | Thursday 10 October 7.30pm
£20

Mae Steve Knightley y cyfansoddwr caneuon enwog o Orllewin Lloegr, cyn arweinydd y band Show of Hands, wed cyhoeddi taith unigol arloesol ledled y wlad - y gyntaf ers i'r band eiconig ddod i ben. Gan ganolbwyntio ar hyrwyddo ei albwm diweddaraf, *The Winter Yards*, mae'r daith hon yn arwydd o newid mawr yn siwrnai gerddorol Knightley.

Gydag enw da am ganeuon naratif sy'n aros yn y cof a storiau cyfareddol, gall cefnogwyr ddisgwyl bod gyrfa unigol Knightley yn barhad grymus ac atgofus o' etifeddiaeth ddylanwadol mewn cerddoriaeth acwstig.

Renowned West Country songwriter Steve Knightley, former Show of Hands frontman, announces a groundbreaking nationwide solo tour - the first since the iconic band disbanded. Focused on promoting his latest album, *The Winter Yards*, this tour signifies a profound shift in Knightley's musical journey.

With a reputation for haunting narrative songs and captivating storytelling, fans can anticipate Knightley's solo career as a powerful and evocative continuation of his influential legacy in acoustic music.



MARK WATSON: SEARCH

Nos Sadwrn 12 Hydref | Saturday 12 October

8.00pm

£20

Mae mab Mark Watson sy'n 12 oed newydd gael ffôn. Mae ei dad 70 oed wedi bod trwy brofiad mwyaf brawychus ei fywyd. Ac yntau'n dad ac yn blentyn hefyd, sydd bellach tua chanol ei fywyd, mae seren Taskmaster ac enillydd gwobrau lluosog - sydd bellach yn enwog hefyd fel un rhan o dair o'r llwyddiant cwlt YouTube No More Jockeys - yn dychwelyd. Bydd yn ystyried y chwilio am ystyr rydyn ni gyd yn ei wneud, gyda Google neu hebdo. Bydd llawer o jôcs, a sioe sy'n wahanol bob nos.

Mark Watson's 12-year-old son has just got a phone. His 70-year-old dad has been through the most frightening experience of his life. Both a dad and a kid himself, around the midpoint of his life, the Taskmaster star and multiple award-winner - now also famous as one-third of YouTube cult sensation No More Jockeys - returns. He'll consider the search for meaning that we're all on, with or without Google. There'll be a lot of jokes, and a show that's different every night.

Yn Addas i 14+ | Suitable for 14+



RED LADDER: WE'RE NOT GOING BACK

Nos Sul 13 Hydref | Sunday 13 October

7.30pm

£15 (£14)

75 o Lofeydd. 3 Chwaer. 1 Achos. (A phe cyn chwe photel o Babycham)

Yn 2024, bydd deugain mlynedd wedi mynd heibio ers streic y glowyr ym 1984/85, anghydfod sy'n dal i atseinio heddiw. Ond nid mater o bicedwyr yn erbyn yr heddlu'n unig oedd y streic - yn y gomedi gerddorol hon sy'n procio'r meddwl, does dim glowyr a dim heddlu. Yn hytrach, dilynwn hynt a helynt tair chwaer mewn pentref glofaol, a gafodd eu heffeithio'n sylweddol gan ryfel y Llywodraeth yn erbyn y glowyr, ac yn benderfynol o sefydlu cangen o 'Women Against Pit Closures'.

75 Mines. 3 Sisters. 1 Cause. (And a six-pack of Babycham)

2024 is the fortieth anniversary of the 1984/85 miners' strike, a dispute that still resonates today. But the strike wasn't just about pickets vs police - in this thought-provoking musical comedy, there are no miners and no cops. Instead, we follow the fortunes of three sisters in a pit village, hit hard by the Government's war against the miners and determined to set up a branch of 'Women Against Pit Closures'.

Canllaw oed 12+ | Age Guidance 12+



MUGENKYO TAIKO DRUMMERS: IN TIME 30TH ANNIVERSARY TOUR

Nos Fercher 16 Hydref | Wednesday 16 October 7.30pm
£27 (£24 o dan 18 oed / for under 18s)

Ymunwch â dathliad pen-blwydd nodedig Mugenkyo yn 30 oed, gyda sioe arbennig iawn o guriadau mawr, rhyfeddodau gwledol ac egni hanfodol.

Gan fynd â'r gynulleidfa ar daith 'drwy amser', dyma i chi siwrnai wfreiddiol ar hyd eu 30 mlynedd. Mae'r cyngerdd yn brofiad theatrig cyflawn, gyda choreograffi deinamig a rhythmiau nerthol yn cyferbynnu â seinweddau llawn naws.

We're so excited to welcome Mugenkyo back to Mwlidan as they celebrate a landmark 30th anniversary, with a very special show of big beats, visual treats & vital energy.

Taking the audience on a journey 'in time', a thrilling ride through their 30 years, the concert is a full theatrical experience, with dynamic choreography and heart-pounding rhythms contrasting with atmospheric soundscapes.



THE DREAMER – LIVE

Nos Wener 18 Hydref | Friday 18 October 7.30pm
£16 / £14 Concessions / £10 (o dan 16 / under 16's)
£35 VIP*

SIOE HUD NEWYDD AR GYFER 2024 | A BRAND NEW MAGIC SHOW FOR 2024

Paratowch eich hun ar gyfer y sioe hud newydd sbon, anghredadwy, llawn cyffro gan y consuriwr sydd fwyaf drwg-enwog am jamio switsfwrdd y BBC ar ôl iddo ragweld rhifau'r loteri yn gywir. Mae James Phelan, seren enwog *The Greatest Magician*, yn dychwelyd gyda sioe newydd sbon yn dilyn ei daith theatrau 300 o ddyddiadau heb ei thebyg, lle gwerthwyd pob tocyn.

Get ready. The most exciting, brand new, enigmatic magic show from the magician most infamous for jamming the BBC switchboard after he correctly predicted the lottery. Internationally acclaimed star of *The Greatest Magician*, James Phelan, returns from his unprecedented, complete sell out, 300 date theatre tour with a brand new show.

*£35 ar gyfer profiad VIP, sy'n cynnwys cwrrdd a chyfarach James Phelan, sioe ecsgliwsif cyn y prif ddigwyddiad yn ogystal â nwyddau wedi'u llofnodi.

*£35 for a VIP experience, which includes a meet and greet with James Phelan, an exclusive close-up show before the main event as well as signed merchandise.



BLACK RAT: THE THREE MUSKETEERS

Nos Sadwrn 19 Hydref | Saturday 19 October 7.30pm
£15 (£14)

Mae'r tîm a gyflwynodd *The Invisible Man* a *The Adventures of Sherlock Holmes* yn ôl gyda fersiwn hwyliog gwyd o antur 17eg ganrif Alexandre Dumas.

Ymunwch â'n harwyr – D'Artagnan, Athos, Porthos, Aramis – ar antur llawn brwydrau â chleddyfau, doniolwch pwy yw pwy, hwyll a sbri. Fe gewch chi fwynhau hiwmor, egni a chwerthin lond eich bol.

The team that brought you *The Invisible Man* and *The Adventures of Sherlock Holmes* is back with a gloriously funny take on Alexandre Dumas' 17th Century adventure.

Join our heroes - D'Artagnan, Athos, Porthos, and Aramis - on a riotous journey filled with sword fights, mistaken identities, and hilarious hijinks. Expect quick wit and boundless energy, with non-stop laughs from start to finish.

Gyda chefnogaeth Cyngor Celfyddydau Cymru | Supported by Arts Council of Wales
Argymhelliaid – Addas ar gyfer pobl 11 oed a hŷn | Recommended for ages 11+

MEI Theatrical: THERE'S A MONSTER IN YOUR SHOW . . .

Dydd Sul 10 Tachwedd | Sunday 10 November 12.30pm & 2.30pm
£15 (£13)

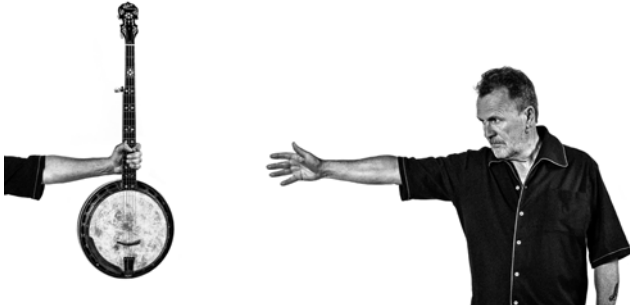
Mae anturiaethau rhyngweithiol Tom Fletcher ar gyfer dychymyg byw yn llamu o'r dudalen i'r llwyfan, wrth i'r gyfres hoffus *Who's in Your Book?* wneud ei début fel sioe gerdd newydd sbon. Disgwyliwch ddigonedd o hwyll chwareus i'ch plantos bach wrth i'w hoff gymeriadau, gan gynnwys Monster, Dragon, Alien ac Unicorn, ddod yn fyw mewn sioe sy'n llawn cyfleoedd rhyngweithiol i'w mwynhau gyda'ch gilydd.

There's a Monster in Your Show... ac mae'n edrych ymlaen at gwrrd â chi!

Tom Fletcher's interactive adventures for big imaginations are leaping from page to stage, as the beloved *Who's in Your Book?* series makes its debut as a brand-new musical show. Expect plenty of fun for your littlest ones as their favourite characters, including Monster, Dragon, Alien and Unicorn, come to life in a show that is packed with playful moments to enjoy together.

There's a Monster in Your Show... and he can't wait to meet you!

Addas ar gyfer pobl 2 oed a hŷn | Recommended for ages 2+



MARTIN SIMPSON: A MASTER OF HIS ART

Nos Wener 15 Tachwedd | Friday 15 November 7.30pm
£20

Ac yntau'n un o berfformwyr gwerin mwyaf uchel ei barch Lloegr, sy'n cael ei gydnabod yn eang fel un o'r chwaraewyr gitâr acwstig a sleid gorau yn y byd, mae dehongliadau Martin o ganeuon traddodiadol yn gampweithiau storïa. Mae ei sioeau unigol hynod yn ddwys, yn eclectig, yn swynol ac yn deimladwy dros ben. Bob amser yn doreithiog, a byth yn un i orffwys yn hir heb gitâr yn ei ddwylo a chân yn ei ben, mae Martin Simpson yn parhau i deithio ar hyd a lled y DU a thu hwnt gan roi angerdd, tristwch, cariad, harddwch, trasiedi a mawredd i gynulleidfaoedd sy'n llwyr ymgolli yn ei berfformiadau unigol personol tu hwnt.

One of England's most revered folk performers, widely acknowledged as one of the finest acoustic and slide guitar players in the world, Martin's interpretations of traditional songs are masterpieces of storytelling. Always prolific, and never one to rest long without a guitar in his hands and a song in his head, Martin Simpson continues to travel the length and breadth of the UK and beyond giving rapt audiences passion, sorrow, love, beauty, tragedy and majesty through his remarkable intimate solo performances..



ARCHWILIO'R BERTHYNAS RHWNG FFERMIO YNG NGHYMRU A BYD NATUR | EXPLORING THE RELATIONSHIP BETWEEN WELSH FARMING AND NATURE

Dydd Sadwrn 16 Tachwedd | Saturday 16 November 2.00pm | £5
Sgwrs | Talk [Galeri / Gallery](#)

Yn llyfr Carwyn Graves, *Tir: The Story of the Welsh Landscape*, mae'n ein helpu i ddatod y ffordd y mae iaith, diwylliant a defnydd tir wedi'u cysylltu'n annatod yng Nghymru, a'r dylanwad mae hynny'n siwr o gael ar sgysiaau cyfoes. Bydd Carwyn yn trafod y pwnc hwn gyda Jessica McQuade (Rheolwr Wholescape WWF), gan roi sylw i'r hyn y gallwn ei ddysgu o'r gorffennol er mwyn helpu i ddiogelu'r dyfodol.

In Carwyn Graves' book *Tir: The Story of the Welsh Landscape*, he helps us to unpick the way in which language, culture and land use are inextricably linked in Wales, and the influence that surely has on contemporary conversations. Carwyn will discuss this topic with Jessica McQuade (Wholescape Manager for WWF), unearthing what we can learn from the past to help protect the future.

Cynhelir y sgwrs hon yn Saesneg. | This conversation will be in English.
Sgwrs nesaf | Next talk: 01.02.25 - *Brwydro dros Dir Cymru* gyda | with Carwyn Graves
(yn Gymraeg | in Welsh)



LIGHTHOUSE THEATRE: O' LITTLE TOWN OF ABERYSTWYTH

Nos Fercher 20 Tachwedd | Wednesday 20 November
7.30pm | £15 (£14)

...Plant yn canu, seirenau'r heddlu'n canu, castanau wedi'u dwyn o dân plentyn amddifad....ac mewn stryd frwnt yn Chinatown, mae Siôn Corn siop adrannol yn gorwedd yn farw mewn pwll o'i waed ei hun - Aberystwyth adeg y Nadolig.

Yn dilyn llwyddiant *Aberystwyth Mon Amour* yn 2016, mae Lighthouse Theatre yn dychwelyd gyda premiere llwyfan o nofel Noir Gymreig arall gan Malcolm Pryce. Wedi'i gyfarwyddo gan Llinos Daniel, gyda cherddoriaeth wreiddiol gan Kieran Bailey, dyma i chi gynhyrchiad ar y cyd â Chanolfan y Celfyddydau Pontardawe a Chanolfan y Celfyddydau Aberystwyth gyda chymorth Cyngor Celfyddydau Cymru a Tŷ Cerdd.

...Children singing, police sirens ringing, chestnuts stolen from an orphan's fire....and in a filthy alley in Chinatown a department store Father Christmas lies dead in a pool of his own blood - Aberystwyth at Christmas.

Following the success of *Aberystwyth Mon Amour* in 2016, Lighthouse Theatre returns with a stage premiere of another Malcolm Pryce Welsh Noir novel. Directed by Llinos Daniel, with original music by Kieran Bailey, this is a co-production with Pontardawe Arts Centre and Aberystwyth Arts Centre, with the help of Arts Council Wales and Tŷ Cerdd.



A MYTHICAL MUSICAL ODYSSEY WITH CALAN

Nos Sadwrn 23 Tachwedd | Saturday 23 November 7.30pm
£21.50

Ymgollwch mewn byd hudolus wrth i'r pedwarawd cyfareddol CALAN ymddangos ar ein llwyfan gyda'u brand unigryw o werin-pwer. Mae'r daith gerddorol hon yn cyfuno alawon a chaneuon gwreiddiol gydag alawon hynafol a ddaethpwyd o hyd iddynt yn Llyfrgell Genedlaethol Cymru. Ymunwch â ni am noson ryfeddol yn cynnwys traciau o'u halbwm y bu disgwyl mawr amdano, *Nefydd*.

Immerse yourself in an enchanting world as the mesmerising quartet CALAN grace our stage with their unique brand of power-folk. This musical odyssey combines original tunes and songs with ancient melodies unearthed from the National Library of Wales. Join us for an extraordinary evening featuring tracks from their highly anticipated album, *Nefydd*.



HEJIRA: CELEBRATING JONI MITCHELL

Nos Wener 29 Tachwedd | Friday 29 November 7.30pm
£22

Dathlu Joni Mitchell: mae'r band 7 aelod Hejira yn perfformio gweithiau mwyaf y gantores-gyfansoddwraig hynod ddawnus. Gyda'r gantores/gitarydd rhagorol Hattie Whitehead, mae'r band hwn yn cyfleu barddoniaeth, angerdd a harddwch campweithiau Mitchell i'r dim.

Celebrating Joni Mitchell: the 7-piece band Hejira performs the greatest works of the genius singer-songwriter. Fronted by the outstanding vocalist/guitarist Hattie Whitehead, this band fully captures the poetry, passion and beauty of Mitchell's masterpieces.



MARTYN JOSEPH

Nos Fercher 4 Rhagfyr | Wednesday 4 December 7.30pm
£21

Mae wedi cael ei gymharu â Bruce Springsteen, John Mayer, Bruce Cockburn a Dave Matthews. Mae Martyn Joseph wedi creu ei arddull a'i enw da ei hun fel perfformiwr byw cyfareddol ac mae'n sefyll yn ei rinwedd ei hun, wedi'i adeiladu ar enw da am roi'r hyn y mae miloedd o bobl wedi'i ddisgrifio fel profiad cerddoriaeth fyw gorau eu bywydau. Dechreuodd 2024 gyda rhyddhau albwm stiwdio newydd "meistrolgar sy'n diffinio gyrfa" (Fatea UK), *This Is What I Want To Say*, ynghyd â thraith o'r DU y gwerthwyd pob tocyn ar ei chyfer, ac yna sioeau yn Ewrop a Gogledd America.

Compared to Bruce Springsteen, John Mayer, Bruce Cockburn and Dave Matthews, Martyn Joseph has created his own style and reputation as a mesmerising live performer and stands in his own right, built on a reputation for giving what thousands have described as the best live music experience of their lives. 2024 kicked off with the release of a new "masterful and career defining" (Fatea UK) studio album, *This Is What I Want To Say*, along with a sell out UK tour, followed by shows in mainland Europe and North America.



YSGOL GYMUNEDOL PENPARC: SIOE NADOLIG

Dydd Iau 5 Rhagfyr | Thursday 5 December 1.30pm & 6.30pm
£5

Rydym wrth ein bodd i groesawu disgyblion Ysgol Gymunedol Penparc gyda'u sioe nadolig o gerddoriaeth, caneuon ac eitemau amrywiol am y tro cyntaf ar y prif lwyfan yma yn y Mwldan. Dewch i fwynhau gyda hwy ar gyfer y digwyddiad arbennig hwn.

We're delighted to welcome the children of Ysgol Gymunedol Penparc with their new christmas show of music and song for the first time on the main stage at Mwldan. Come and join them for this special event.



ALFIE MOORE: A FACE FOR RADIO

Nos Wener 6 Rhagfyr | Friday 6 December 7.30pm
£20

Mae deng mlynedd ar hugain o waith sifft, yng ngwaith dur Sheffield i ddechrau ac yna fel plismon ar y bît (lle cafodd ei bwnio yn ei wyneb gryn dipyn), wedi gadael Alfie Moore gyda 'wyneb ar gyfer y radio'. Nid wyneb 'cartrefol' mohono, ond yn hytrach wyneb sydd wedi gweld diffyg cynnal a chadw ar hyd y blynnyddoedd.

Yn ei 40au, fe drodd newid annisgwyl mewn gyrfa yr Alfie canol oed o fod yn blismon stryd i fod yn seren radio'r BBC. Ond pan ddaeth enwogrwydd teledu i'w ran, a allai fynd i'r afael ag ef, neu a oedd wedi mynd yn rhy hen?

Thirty years of shift-work, initially in the Sheffield steelworks and then as a copper on the beat (where he was punched in the face quite a lot), has left Alfie Moore with 'a face for radio'. A face not so much 'lived in' as inhabited by a settlement of squatters with little regard to property maintenance and repair.

In his 40s a surprising career shift turned middle-aged Alfie from street cop to BBC radio star. But when TV fame beckoned could he grasp it or was he past it?

CARDIGAN THEATRE: CINDERELLA

Dydd Sadwrn 21 Rhagfyr | Saturday 21 December 2.00pm
Dydd Sul 22 Rhagfyr | Sunday 22 December 2.00pm
Dydd Llun 23 Rhagfyr | Monday 23 December 2.00pm
Dydd Mawrth 24 Rhagfyr | Tuesday 24 December 2.00pm
Dydd Gwener 27 Rhagfyr | Friday 27 December 2.00pm

£10

Ymunwch â Theatr Aberteifi ar gyfer y Pantomeim gorau oll, Cinderella!

Mae Cinderella'n dymuno gadael ei bywyd diflas fel morwyn i'w llysfam greulon a'i chworiydd hyll, ond pan mae'r tywysog yn cyhoeddi ei fod yn mynd i gynnal dawns frenhinol er mwyn dod o hyd i wraig, efallai y caiff hi ei dymuniad wedi'r cyfan! Gydag ychydig o help gan ei Dewines Garedig a'i ffrind gorau Buttons, a allai hi wireddu ei breuddwydion a byw'n hapus byth wedyn? Cewch hwy! a sbri yn y pantomeim mwyaf hudolus oll, yn cynnwys caneuon hen a newydd, dawnsio disglair, jôcs ofnadwy, slapstic doniol a llawer o gyfranogiad gan y gynulleidfa. Gyda thalent leol o Aberteifi a thu hwnt, fe gewch chi fynd i'r ddawns eleni gyda'r pantomeim teuluol ysblennydd hwn! Mae'r cloc yn tician, felly archebwch eich tocynnau yn gyflym!

Join Cardigan Theatre for the Fairy Godmother of all Pantomimes, Cinderella!

Cinderella wishes she could leave her dull life as a servant to her evil stepmother and ugly sisters, but when the prince announces he's going to hold a royal ball to find himself a wife, she may get her wish after all! With a little help from her Fairy Godmother and best friend Buttons, could she have her dreams come true and live happily ever after? You'll have a 'ball' at the most magical pantomime of them all, featuring songs new and old, dazzling dance routines, awful jokes, bundles of audience participation and hilarious slapstick. Featuring local talent from across Cardigan and beyond. You shall go to the ball this year with this spectacular family pantomime! The clock is ticking, so book your tickets fast!

Dydd Sadwrn 28 Rhagfyr | Saturday 28 December 2.00pm
Nos Sadwrn 28 Rhagfyr | Saturday 28 December 7.00pm
Dydd Sul 29 Rhagfyr | Sunday 29 December 2.00pm
Dydd Llun 30 Rhagfyr | Monday 30 December 2.00pm



ELIZA CARTHY & JENN REID

Nos Sadwrn 8 Chwefror | Saturday 8 February

7.30pm

£20 (£18)

Os oes un cerddor yn ymgorffori dynameg a bywiogrwydd yr adfywiad gwerin Seisnig presennol, yna Eliza Carthy MBE yw honno. A hithau wedi'i henwebu ddwywaith ar gyfer Gwobr Mercury, ac wedi ennill gwobrau di-rif eraill dros ei gyrfa ddeng mlynedd ar hugain, mae Eliza wedi perfformio a recordio ledled y byd gydag amrywiaeth eang o artistiaid gan gynnwys, Paul Weller a Jarvis Cocker. Yn ymuno ag Eliza bydd Jennifer Reid, artist sy'n perfformio caneuon gwaith tafodieithol Swydd Gaerhirfryn yr 19eg Ganrif, baledi printiedig Manceinion a stepiau clocio. Mae hi'n gweithio ar draws y byd academaidd, maes perfformio gwerin, ymgynghori treftadaeth a'r cyfryngau i ddod â hanes diwydiannol yn ôl i'r bobl.

If there is one musician who embodies the dynamism and vitality of the current English folk revival, it's Eliza Carthy MBE. Twice nominated for the Mercury Prize, and winner of innumerable other accolades over her thirty-year career, Eliza has performed and recorded around the world with a diverse array of artists including Paul Weller and Jarvis Cocker. Joining Eliza will be Jennifer Reid, an artist who performs 19thC Lancashire dialect work songs, Manchester broadside ballads and clog steps. She works across academia, folk performance, heritage consultation and media to bring industrial history back to the people.



THE IRISH HOUSE PARTY

Nos Sadwrn 15 Chwefror | Saturday 15 February

7.30pm

£20

O'r diwedd, sioe gerddoriaeth Wyddelig sydd wedi deillio o lwerddon heb yr ystrydebau sydd gan amlaf yn dilyn!

Mae'r gerddoriaeth fyw, y dawnsio Gwyddelig a'r tynnu coes yn heintus ac yn treiddio i'r ysbryd mewn eiliadau. Gan gynnwys cerddorion a dawnsywyr sy'n bencampwyr lwerddon Gyfan, mae'r Irish House Party yn cyfuno asiad unigryw o rymgweithio â'r gynulleidfa gyda straeon hynod ddi-ddorol am y gerddoriaeth a'r offerynnau eu hunain, noson allan wych!

At last, an Irish music show that has come out of Ireland without the clichés that usually follow!

The live music, Irish dancing and banter is infectious and enters the psyche in seconds. Featuring All Ireland champion musicians and dancers, The Irish House Party combines a unique blend of light-hearted audience interaction with fascinating stories about the music and the instruments themselves, a fabulous night out!

THE GRUFFALO

Dydd Sadwrn 1 Mawrth | Saturday 1 March

1.30pm & 4.00pm

Dydd Sul 2 Mawrth | Sunday 2 March

11.30am & 2.30pm

£15 (£12)

Ymunwch â'r Llygodyn ar antur feiddgar drwy'r goedwig dywyll yn addasiad cerddorol, hudol Tall Stories o'r llyfr lluniau clasurol gan Julia Donaldson ac Axel Scheffler – sy'n dathlu 25 mlynedd yn 2014!

Canu, chwervthin a sbort diddiwedd i blant 3 oed ac yn hŷn a'u teulu, yn y sioe hoffus iawn hon sydd wedi teithio ledled Prydain a'r byd!

The Gruffalo © Julia Donaldson ac Axel Scheffler 1999 – Llyfrau Plant Macmillan

Join Mouse on a daring adventure through the deep, dark wood in Tall Stories' magical, musical adaptation of the classic picture book by Julia Donaldson and Axel Scheffler - celebrating 25 years in 2024!

Songs, laughs and monstrous fun for children aged 3 and up and their grown-ups, in the much-loved show that's toured Britain and the world! --

The Gruffalo © Julia Donaldson and Axel Scheffler 1999 – Macmillan Children's Books



DIGWYDDIADAU DARLLEDU
BROADCAST EVENTS



ANDRÉ RIEU 2024 MAASTRICHT CONCERT: THE POWER OF LOVE

Nos Sadwrn 31 Awst | Saturday 31 August 7.00pm
 Dydd Sul 1 Medi | Sunday 1 September 2.00pm
 Dydd Sul 8 Medi | Sunday 8 September 2.00pm
 £18 (£17)

Mae André Rieu yn barod i'ch syfrdanu gyda'i gyngerdd sinema newydd sbon Power of Love. O'i dref enedigol hardd, Maastricht, mae The King of the Waltz yn cyflwyno sioe ysblynydd ar gyfer y sgrin fawr sy'n rhaid ei gweld. Gyda'i Gerddorfa Johann Strauss fyd-enwog a chast o gannoedd, ymddengys mai hwn fydd digwyddiad cerddorol yr haf gan un o artistiaid mwyaf toreithiog y byd.

André Rieu is ready to blow you away with his brand new cinema concert Power of Love. From his picturesque hometown of Maastricht The King of the Waltz presents a must-see big screen spectacular. Accompanied by his world famous Johann Strauss Orchestra and a cast of hundreds this promises to be the music event of the summer by one of the world's most prolific artists.



PRESENT LAUGHTER (PG)

Nos Iau 5 Medi | Thursday 5 September 7.00pm
 Dydd Sadwrn 7 Medi | Saturday 7 September 2.00pm
 Nos Iau 19 Medi | Thursday 19 September 7.00pm
 Dydd Sadwrn 21 Medi | Saturday 21 September 2.00pm
 £15 (£14)

Mae'r cynhyrchiad gwobrwyedig o gomedi bryfoclyd Noël Coward sy'n cynnwys Andrew Scott (*Vanya, Fleabag*) yn dychwelyd i'r sgrin fawr.

Wrth iddo baratoi i fynd ar daith dramor, mae 'na berygl bod yr actor Garry Essendine yn mynd i golli rheolaeth ar ei fywyd lliwgar.

The multi award-winning production of Noël Coward's provocative comedy featuring Andrew Scott (*Vanya, Fleabag*) returns to the big screen.

As he prepares to embark on an overseas tour, star actor Garry Essendine's colourful life is in danger of spiralling out of control.

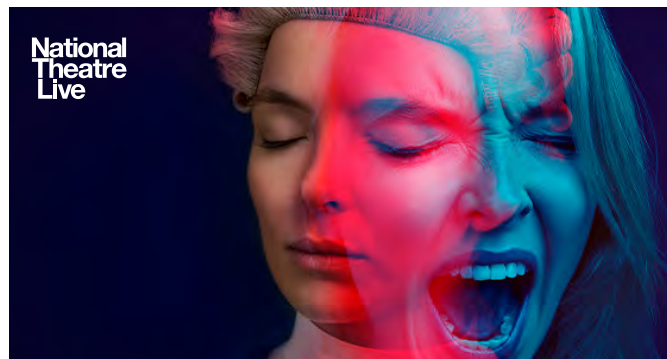


THE MARRIAGE OF FIGARO

Nos Fawrth 10 Medi | Tuesday 10 September 6.30pm
Dydd Sul 15 Medi | Sunday 15 September 2.00pm
£18 (£17)

Mae Figaro'n priodi, ac fe'ch gwahoddir i ymuno â theulu Almaviva am ddiwrnod gwyllt o ddatguddiadau a sgandal. Mae opera gomig Mozart yn llawn troeon plot, chwantau gwaharddedig ac alawon bythgofiadwy, gan gyfuno comedi hynod ddifyr gydag eiliadau o harddwch syfrdanol.

It's Figaro's wedding, and you're invited to join the Almaviva household for an uproarious day of revelation and scandal. Mozart's comic opera is packed with plot twists, forbidden desires and unforgettable melodies, combining laugh-out-loud comedy with moments of breathtaking beauty.



PRIMA FACIE (15)

Nos Iau 12 Medi | Thursday 12 September 7.00pm
Nos Fercher 18 Medi | Wednesday 18 September 7.00pm
Nos Iau 26 Medi | Thursday 26 September 7.00pm
Dydd Iau 17 Hydref | Thursday 17 October 2.00pm
£15 (£14)

Cafodd *Prima Facie* ei rhyddhau'n wreiddiol yn 2022 gan dorri tir newydd yn y swyddfa docynnau i ddod yr NT Live mwyaf poblogaidd erioed. Rydym wrth ein bodd i allu rhannu perfformiad gwobrwyedig Jodie Comer gyda chynulleidfaoedd eto.

***Prima Facie* was originally released in 2022 and broke multiple box office records to become the most watched NT Live of all time. We're thrilled to be able to share Jodie Comer's multi award-winning performance with audiences again.**



RIVERDANCE 25TH ANNIVERSARY

Dydd Sul 22 Medi | Sunday 22 September 2.00pm
 Nos Fawrth 25 Medi | Tuesday 24 September 7.00pm
 Dydd Sul 29 Medi | Sunday 29 September 2.00pm
 £16 (£15)

A hithau wedi tarddu fel perfformiad yn ystod yr egwyl yng Nghystadlueth Cân Eurovision, mae'r *Riverdance* wedi datblygu i fod yn ffenomenon fyd-eang. Mae'r cynhyrchiad hwn i ddathlu 25 mlynedd yn ailwampiad grymus ac egniol o'r sioe, sy'n cael ei chlodfori ar draws y byd am ei cherddoriaeth sydd wedi ennill gwobrau Grammy ac am egni ac angerdd ei ddawnsuwr Gwyddelig a rhyngwladol.

Having originated as an interval performance during the 1994 Eurovision Song Contest, *Riverdance* has gone on to become a worldwide phenomenon. This 25th Anniversary production is a powerful and stirring reinvention of the show, celebrated the world over for its Grammy Award-winning music and the thrilling energy and passion of its Irish and international dance.



MATTHEW BOURNE'S EDWARD SCISSORHANDS

Nos Fercher 25 Medi | Wednesday 25 September 7.00pm
 Dydd Sadwrn 28 Medi | Saturday 28 September 2.00pm
 Nos Iau 17 Hydref | Thursday 17 October 7.00pm
 £18 (£17)

Bu lle i gynhyrchiad dawns hudol Matthew Bourne o *Edward Scissorhands* yng nghalonau cynulleidfaoedd ledled y byd ers ei berfformiad cyntaf yn 2005. Yn seiliedig ar ffilm glasurol Tim Burton ac yn cynnwys cerddoriaeth hynod hardd Danny Elfman a Terry Davies, mae Bourne a'i Gwmni New Adventures yn dychwelyd at y stori ffraeth, chwerwfelys hon am fachgen anghyflawn, wedi'i adael ar ei ben ei hun mewn byd newydd rhyfedd

Matthew Bourne's magical dance production of *Edward Scissorhands* has carved a place in the hearts of audiences worldwide since its premiere in 2005. Based on the classic Tim Burton movie and featuring the hauntingly beautiful music of Danny Elfman and Terry Davies, Bourne and his New Adventures Company return to this witty, bittersweet story of an incomplete boy left alone in a strange new world.



ALICE'S ADVENTURES IN WONDERLAND

Nos Fawrth 15 Hydref | Tuesday 15 October 7.15pm
 Dydd Sul 20 Hydref | Sunday 20 October 2.00pm
 £18 (£17)

Dewch i lawr y twll cwningen yn yr addasiad bale hwn o stori deuluol enwog Lewis Carroll. Ewch ar daith trwy Wonderland gydag Alice a chewch ddod ar draws llu o gymeriadau chwilfrydig yn nehongliad theatraidd unigryw Christopher Wheeldon.

Tumble down the rabbit hole in this ballet adaptation of Lewis Carroll's famous family story. Journey through Wonderland with Alice and encounter a host of curious characters in Christopher Wheeldon's unique theatrical interpretation.



VAN GOGH: POETS & LOVERS

Nos Fercher 6 Tachwedd | Wednesday 6 November 7.00pm
 Dydd Sadwrn 9 Tachwedd | Saturday 9 November 2.00pm
 Nos Fawrth 19 Tachwedd | Tuesday 19 November 7.00pm
 Dydd Sul 24 Tachwedd | Sunday 24 November 2.00pm
 £12 (£11)

Peidiwch â cholli'r arddangosfa unwaith mewn canrif hon o baentiadau ysbennydd Van Gogh o Oriol Genedlaethol, Llundain. Gan ganolbwyntio ar ei broses creadigol unigryw, mae *Van Gogh: Poets & Lovers* yn archwilio blynyddoedd yr artist yn ne Ffrainc, lle drawsnewidiodd ei arddull. Bellach roedd Van Gogh ar dân dros adrodd straeon yn ei gelf, gan droi'r byd o'i gwmpas yn ofodau bywiog, delfrydol ac yn gymeriadau symbolaidd.

Don't miss this once-in-a-century exhibition of Van Gogh's spectacular paintings. The National Gallery, London, hosts the UK's biggest-ever exhibition of one of the most beloved, and perhaps the most misunderstood, artists of all time. Focusing on his unique creative process, *Van Gogh: Poets & Lovers* explores the artist's years in the south of France, where he revolutionised his style. Van Gogh became consumed with a passion for storytelling in his art, turning the world around him into vibrant, idealised spaces and symbolic characters.



ANDRÉ RIEU CHRISTMAS 2024: GOLD AND SILVER

Dydd Sadwrn 7 Rhagfyr Saturday 7 December	2.00pm
Dydd Sul 8 Rhagfyr Sunday 8 December	2.00pm
Dydd Sadwrn 14 Rhagfyr Saturday 14 December	2.00pm
Dydd Fawrth 31 Rhagfyr Tuesday 31 December	2.00pm
£18 (£17)	

Fel llygedyn o ddisgleirdeb, bydd Cyngerdd Nadolig 2024 André Rieu yn dychwelyd i sinemâu!

Bydd tocynnau ar gyfer y digwyddiad arbennig iawn hwn ar gael i'w harchebu o'r 30ain o Awst.

A ray of glimmer and shine, André Rieu's 2024 Christmas Concert will be returning to cinemas!

Tickets for this very special event will be available to book from the 30th August.



CINDERELLA

Nos Fawrth 10 Rhagfyr Tuesday 10 December	7.15pm
Dydd Sul 15 Rhagfyr Sunday 15 December	2.00pm
£18 (£17)	

Y Nadolig hwn, cewch eich cludo i fyd etheraidd lle mae ychydig o lwch tylwyth teg yn gwireddu breuddwydion. Mae'r bale hudolus hwn gan Goreograffydd Sefydol y Royal Ballet, Frederick Ashton, yn brofiad theatraidd i'r teulu cyfan.

This Christmas, be transported into an ethereal world where a sprinkling of fairy dust makes dreams come true. This enchanting ballet by The Royal Ballet's Founding Choreographer Frederick Ashton is a theatrical experience for all the family.



THE NUTCRACKER

Nos Fawrth 17 Rhagfyr | Tuesday 17 December 7.00pm
Nos Sadwrn 21 Rhagfyr | Saturday 21 December 6.00pm
Nos Lun 23 Rhagfyr | Monday 23 December 6.00pm
Dydd Fercher 1 Ionawr | Wednesday 1 January 2.00pm
£18 (£17)

Dewch i ddarganfod swyn y bale gyda'r wledd Nadoligaidd ddisglair hon i'r teulu cyfan. Mae dyluniadau cyfnod Julia Trevelyan Oman yn dod â swyn yr Wyl i'r cynhyrchiad hoffus hwn y Royal Ballet gan Peter Wright, wrth i hud y stori dylwyth teg ddod ynghyd â dawnsio ysblennydd yn y bale clasurol bythgofiadwy hwn.

Discover the enchantment of ballet with this sparkling festive treat for the whole family. Julia Trevelyan Oman's period designs bring festive charm to Peter Wright's beloved Royal Ballet production, as fairytale magic comes together with spectacular dancing in this unforgettable classic ballet.



WOLF WITCH GIANT FAIRY

Dydd Gwener 3 Ionawr | Friday 3 January 2.00pm
Dydd Sadwrn 4 Ionawr | Saturday 4 January 2.00pm
Dydd Sul 5 Ionawr | Sunday 5 January 2.00pm
£10 (£7 o dan 18 / under 18s)

Yn dilyn rhediad a enillodd Wobr Olivier yn 2021 (Sioe Deuluol Orau), daw'r opera werin hon 'a lwyfannir gyda chyfaredd' (The Stage) i sinemâu am y tro cyntaf. Red Riding Hood sy'n gyfrifol am ddosbarthu bara i'w Mam-gu, ym mherfedd y goedwig chwedlonol. Ond ar y ffordd, mae Red yn cwrdd â Blaidd cyfrwys sy'n ei thwylllo i ddilyn llwybr gwahanol. Ar hyd y ffordd, mae Red yn dod ar draws criw o gymeriadau lliwgar, gan gynnwys gwrach frawychus, cath sy'n siarad a Phedler perswadiol iawn.

Following the Olivier Award-winning run in 2021 (Best Family Show), this 'enchantingly staged' folk opera (The Stage) comes to cinemas for the first time. Red Riding Hood is tasked with delivering bread to her Grandmother, deep in the heart of the fairy-tale forest. But en route, Red meets a cunning Wolf who tricks her into taking a different path. Along the way, Red stumbles into a colourful cast of characters, including a scary witch, a talking cat and a rather persuasive Peddler.

SINEMA CINEMA

PRISIAU'R SINEMA YW: CINEMA PRICES ARE:

£8.40 ar gyfer Oedolion | Adults

£7.70 Pobl Hŷn 60+ / Senior 60+
Myfyriwr Llawn Amser 15+ / Full Time Student 15+
Pobl Anabl / Disabled
Ceiswyr Gwaith / Cymhorthdal Incwm /
Job Seekers / Income Support

£5.90 ar gyfer plant oed 14 ac yn iau | Children aged 14 and under
Aelodau CFFThM Llawn & Ticketsavers / TMFS Full Members
& Ticketsavers

ST ISDEITLAU | SUBTITLES

R DDANGOSIAD HAMDDENOL | RELAXED SCREENING

Bydd ffilmiau'n DECHRAU
ar yr amser a hysbysebir
Films **START** at the
advertised time

Sylwer - Gall amserlenni sinema newid ar
fyr rybudd. Argymhellwn eich bod yn archebu
eich tocynnau ymlaen llaw pryd bynnag bo'n
bosibl - yna gallwn gysylltu â chi os bydd
unrhyw amgylchiadau annisgwyl yn codi.
Mae'r amserlen fwyaf diweddar bob amser
i'w gweld ar ein gwefan, felly gwiriwch cyn
teithio os nad ydych wedi archebu eich tocyn
ymlaen llaw.

**Note - Cinema schedules can be subject
to change at short notice. We recommend
pre-booking your tickets wherever possible;
we can then contact you in the event of any
changes. The most up-to-date schedule can
always be found on our website, so please
check before travelling if you haven't pre-
booked your ticket.**

CYFLE ARALL I WELD... ANOTHER CHANCE TO SEE...

DESPICABLE ME 4 (U)

AWST | AUGUST 16 – 22 @ 12.15, 23 – 29 @ 2.15, 30, 31 @ 2.00, 4.45
MEDI | SEPTEMBER 1 @ 4.45, 2, 3 @ 2.00, 4.45, 7, 8 @ 1.45, 14 @ 5.30,
15 @ 2.30, 21 @ 6.00, 22 @ 1.30, 28 @ 4.30, 29 @ 5.00
HYDREF | OCTOBER 5, 6 @ 1.30, 12 @ 2.15, 26 @ 2.30, 27 @ 1.45,
28 @ 2.00, 29 @ 2.00 **R**, 30, 31 @ 2.00

TRAP (15 TBC)

AWST | AUGUST 16 – 22 @ 12.45, 3.45, 7.45

HAROLD AND THE PURPLE CRAYON (PG TBC)

AWST | AUGUST 16 – 22 @ 5.15, 23 – 29 @ 5.00, 30, 31 @ 2.30
MEDI | SEPTEMBER 1 – 3 @ 2.30

INSIDE OUT 2 (U)

AWST | AUGUST 16 – 22 @ 6.45, 23 – 29 @ 4.45, 30, 31 @ 4.30
MEDI | SEPTEMBER 1 @ 5.45, 2, 3 @ 4.30, 7 @ 5.15, 8 @ 5.15 **R**,
14, 15 @ 5.15, 21 @ 4.30, 22 @ 5.00
HYDREF | OCTOBER 26, 27 @ 2.15

DEADPOOL & WOLVERINE (15)

AWST | AUGUST 23 – 29 @ 7.15

TWISTERS (12A)

AWST | AUGUST 30, 31 @ 7.15
MEDI | SEPTEMBER 1 – 5 @ 7.15

FLY ME TO THE MOON (12A)

MEDI | SEPTEMBER 6 @ 7.00, 7 @ 6.45, 11 @ 7.00

Yn dod cyn hir.... Mae'n bleser gennym gyhoeddi y bydd modd archebu 'Te Prynawn' o fis Medi ymlaen, digwyddiad pythefnosol i gyd-fynd â'n dangosiadau prynawn dydd lau. Mwy o wybodaeth i ddilyn!

Coming soon.. We are excited to announce 'Afternoon Tea' will be bookable from September, a fortnightly event to coincide with our Thursday Matinees. More information to follow!

PECYN PARTI PLANT

£8.50 y plentyn (o leiaf 10 plentyn)
Yn cynnwys tocyn sinema, popgorn bach + carton o ddioid yr un. Hefyd, defnydd o fan cyfarfod, gydag addurniadau, ar gyfer cacen cyn/ar ôl y ffilm.

KIDS PARTY PACKAGE

£8.50 per child (minimum of 10 children). Includes cinema ticket, small popcorn + carton of drink each. Also use of a meeting space, with decorations, for a cake before/ after the film.

Cysylltwch a'r Swyddfa Docynnau / Contact the Box Office:
boxoffice@mwldan.co.uk / 01239 621 200



AWST | AUGUST 16 – 22 @ 2.45, 23 – 29 @ 2.30, 30 @ 2.15, 31 @ 2.15 **ST**
 MEDI | SEPTEMBER 1 – 3 @ 2.15, 14 @ 2.30, 21 @ 1.45

KENSUKE'S KINGDOM (PG)

Neil Boyle | Kirk Hendry | UK | Luxembourg | France | 2023 | 84'

Mae Michael ifanc a'i deulu yn gadael cartref i deithio'r byd mewn cwch. Yn ystod storm, mae'n cael ei daflu i'r môr a'i olchi i'r lan ar ynys lle mae'n rhaid iddo addasu i fywyd ar ei ben ei hun. Dros amser, mae'n teimlo presenoldeb arall, ac yn dysgu bod y byd hwn yn gartref i berygl a harddwch y tu hwnt i'w ddychymyg. Addasiad animeiddiedig o nofel annwyl Michael Morpurgo y mae ei neges o gydweithio i warchod byd natur erioed wedi teimlo'n fwy amserol.

Young Michael and his family leave home to travel the world by boat. During a storm, he is thrown overboard and washed up on an island where he must adapt to life alone. Over time, he feels another presence, and learns that this world is home to both danger and beauty beyond his imagination. Animated adaptation of Michael Morpurgo's beloved novel whose message of working together to protect nature has never felt timelier.



AWST | AUGUST 16, 17 @ 1.00, 4.00, 7.00, 18 @ 1.00, 4.00, 7.00 **ST**,
 19 – 29 @ 1.00, 4.00, 7.00

ALIEN: ROMULUS (15)

Fede Alvarez | UK | USA | 2024 | 119'

Y seithfed ran yn y fasnachfrait *Alien* wedi'i gosod rhwng digwyddiadau *Alien* ac *Aliens*. Wrth chwilio cyffiniau pellaf gorsaf ofod adfeiledig, mae grŵp o wladychwyr gofod ifanc yn dod wyneb yn wyneb â'r ffurf bywyd mwyaf brawychus yn y bydysawd.

The seventh instalment in the *Alien* franchise set between the events of *Alien* and *Aliens*. While scavenging the deep ends of a derelict space station, a group of young space colonisers come face to face with the most terrifying life form in the universe.



AWST | AUGUST 23 – 26 @ 7.30, 27 @ 7.30 **ST**, 28, 29 @ 7.30

IT ENDS WITH US (12A TBC)

Justin Baldoni | USA | 2024 | tbc'

Mae Lily yn credu ei bod hi wedi dod o hyd i gariad go iawn gyda Ryle, ond pan mae digwyddiad poenus yn sbarduno trawma yn y gorffennol, rhaid iddi benderfynu a all cariad yn unig gynnal ei phriodas. Caiff pethau eu cymhlethu'n bellach pan mae ei chariad cyntaf yn dychwelyd i'w bywyd. Blake Lively sy'n chwarae rhan Lily, Justin Baldoni yw Ryle, ac mae'r ffilm yn seiliedig ar y nofel o'r un enw gan Colleen Hoover.

Lily believes she's found true love with Ryle, but when a painful incident triggers past trauma, she must decide if love alone can carry her marriage through. Things are further complicated when her first love returns to her life. Blake Lively plays Lily, Justin Baldoni is Ryle, based on the novel of the same name by Colleen Hoover.



AWST | AUGUST 30 @ 5.00, 31 @ 7.45

MEDI | SEPTEMBER 1 @ 7.45, 2, 3 @ 5.00, 4, 5 @ 7.30

HUNDREDS OF BEAVERS (12A)

Mike Cheslik | USA | 2024 | 108'

Rhaid i werthwr brandi afalau meddw weithio ei ffordd i fyny o ddim i fod yn drapiwr ffyrtau mwyaf Gogledd America fel y gall ennill llaw cariad direidus. Ond yn gyntaf, rhaid iddo drechu cannoedd o afancod. Wedi'i gosod mewn tirwedd aeafol swrrealiaidd heb ddim ond ei ddiffy synnwyr cyffredin i'w arwain, mae Jean Kayak yn brwydro yn erbyn yr elfennau a channoedd o greaduriaid herfeiddiol. Gwyliwn wrth iddo greu trapiau mwyfwy gymhleth. Comedi slapstic a ysbrydolwyd gan bobl fel Charlie Chaplin a Buster Keaton.

A drunken applejack salesman must work from nothing to become North America's greatest fur trapper so he can win the hand of a mischievous lover. But first he must defeat hundreds of beavers. Set in a surreal winter landscape with nothing but his dim wits to guide him, Jean Kayak battles against the elements and hundreds of defiant creatures. We watch as he creates increasingly complex traps. Slapstick comedy inspired by the likes of Charlie Chaplin and Buster Keaton.



AWST | AUGUST 30 @ 7.00
 MEDI | SEPTEMBER 1 @ 8.15, 2, 3 @ 7.00
BORDERLANDS (12A)
 Eli Roth | USA | 2024 | 101'

Cate Blanchett a Kevin Hart yw sêr yr antur ryngalaethol hon sy'n seiliedig ar y fasnachfaint gêm fideo hynod lwyddiannus. Mae Lilith (Blanchett) yn uno â band annisgwyl o gymeriadau rhyfedd, er mwyn amddiffyn merch sydd ar goll, sydd o bosib yn dal yr allwedd i bŵer anhygoel. Gallai tynged y bydysawd fod yn eu dwylo, ond yn hytrach maen nhw'n ymladd dros ei gilydd.

Cate Blanchett and Kevin Hart star in this intergalactic adventure based on the bestselling videogame franchise. Lilith (Blanchett) forms an alliance with an unexpected band of misfits, to protect a missing girl who may hold the key to unimaginable power. The fate of the universe could be in their hands, but they find themselves fighting for each other.



AWST | AUGUST 30 @ 7.45, 31 @ 5.00
 MEDI | SEPTMEBER 1 @ 5.00, 2 @ 7.45 **ST**, 3 @ 7.45, 5 @ 2.00
THELMA (12A)
 Josh Margolin | Switzerland | USA | 2024 | 98'

Pan mae Thelma Post, 93 oed, yn cael ei thwylo gan sgamiwr ffôn sy'n esgus mai e yw ei hŵyr, mae'n cychwyn ar daith beryglus ledled y ddinas i adennill yr hyn a gymerwyd oddi wrthi. Comedi wedi'i hysbrydoli gan brofiadau bywyd go iawn y cyfarwyddwr Josh Margolin a'i fam-gu. *Mission Impossible* i'r henoed.

When 93-year-old Thelma Post gets duped by a phone scammer pretending to be her grandson, she sets out on a treacherous quest across the city to reclaim what was taken from her. Comedy inspired by the real life experiences of director Josh Margolin and his grandmother. *Mission Impossible* for the nonagenarian.



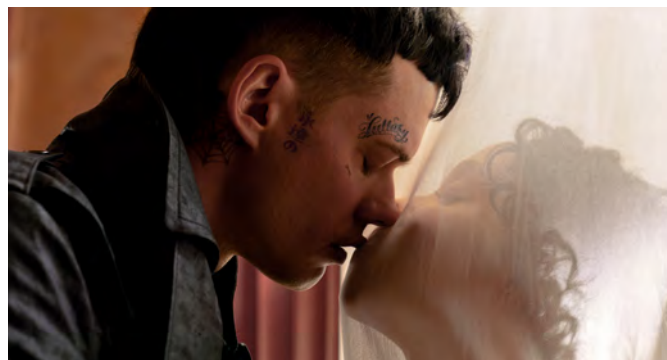
MEDI | SEPTEMBER 6 @ 7.15, 7. 8 @ 2.15, 4.15, 7.15, 10 @ 7.15, 11 @ 7.15 **ST**,
12, 13 @ 7.15, 14, 15 @ 2.15, 5.00, 8.00, 17 – 19 @ 7.15

BEETLEJUICE BEETLEJUICE (12A TBC)

Tim Burton | USA | 2024 | tbc'

Mae tair cenhedlaeth y teulu Deetz yn dychwelyd adref i Winter River yn dilyn trasedi deuluol annisgwyl. A hithau'n dal i gael ei phoenyddio gan atgofion am Beetlejuice, cyn hir caiff bywyd Lydia ei droi wyneb i waered pan mae ei merch wrthryfelgar yn ei harddegau yn darganfod porth dirgel i fywyd ar ôl marwolaeth. Anhrefn Beetlejuice sy'n dilyn. Mewn cast llawn sêr mae Winona Ryder yn dychwelyd fel Lydia a Michael Keaton yn y brif ran.

Three generations of the Deetz family return home to Winter River after an unexpected family tragedy. Still haunted by Beetlejuice, Lydia's life soon gets turned upside down when her rebellious teenage daughter discovers a mysterious portal to the afterlife. Beetlejuice mayhem ensues. A stellar cast sees Winona Ryder return as Lydia and Michael Keaton in the title role.



MEDI | SEPTEMBER 6 @ 7.30, 7. 8 @ 7.45, 10 @ 7.30 **ST**, 11, 12 @ 7.30

THE CROW (15 TBC)

Rupert Sanders | UK | France | USA | 2024 | tbc'

Ailwampiad ar glasur cwlt y 90au. Mae'r cariadon Eric Draven a Shelly Webster yn cael eu llofruddio'n greulon pan mae cythreuliaid ei gorffennol tywyll hi yn dal i fyny gyda nhw. Ac yntau'n cael y cyfle i achub ei wir gariad trwy aberthu ei hun, mae Draven yn dychwelyd i chwilio am ddialedd gwaedlyd yn erbyn y lladdwyr, gan groesi bydoedd y byw a'r meirw er mwyn unioni'r cam.

Remake of the 90s cult classic. Soulmates Eric Draven and Shelly Webster are brutally murdered when the demons of her dark past catch-up with them. Given the chance to save his true love by sacrificing himself, Draven returns to seek bloody revenge against the killers, traversing the worlds of the living and the dead in order to right the wrongs.



MEDI | SEPTEMBER 8 @ 6.15

PERFECT DAYS (PG)

Wim Wenders | Japan | Germany | 2023 | 125'



Mae Hirayama yn teimlo'n fodlon â'i fywyd fel glanhawr toiledau cyhoeddus yn Tokyo. Y tu allan i'w drefn strwythuredig, mae'n hoffi cerddoriaeth ar dapiau casét, mae'n darllen llyfrau ac yn tynnu lluniau. Trwy gyfarfyddiadau annisgwyl, mae'n myfyrio ar ddo o hyd i harddwch a llawenydd tawel yn y byd. Achos cryf dros fyw'n syml yn yr hyn sy'n cael ei ystyried fel ffilm nodwedd orau Wim Wender ers blynyddoedd.

Hirayama feels content with his life as a public toilet cleaner in Tokyo. Outside of his structured routine, he cherishes music on cassette tapes, reads books and takes photos. Through unexpected encounters, he reflects on finding beauty and quiet joy in the world. A strong case for simple living in what's touted as being Wim Wender's best feature film in years.



MEDI | SEPTEMBER 13 @ 7.00, 14 @ 8.15, 15 @ 7.00, 19 @ 2.00

CARVING THE DIVINE (TBC)

Yujiro Seki | Japan | USA | 2019 | 98'

Ffilm ddogfen yw *Carving the Divine* sy'n cynnig cipolwg prin ar draddodiad cerfio pren Bwdhaidd hynafol y Bushi. Rydyn ni'n gweld sut mae'r ymarferwyr modern yn brwydro i ddiogelu'r etifeddiaeth yn Japan sy'n newid yn gyflym. Mae'r ffilm yn datgelu byd cyfrinachol y berthynas meistr-prentis rhwng y cerflunwyr hyn, ac yn y pen draw y llwybr i ddo yn artist go iawn, o ran sgiliau ac ysbryd hefyd.

***Carving the Divine* is a documentary film that offers a rare look into the ancient Buddhist woodcarving tradition of the Busshi. We see how the modern day practitioners are struggling to preserve its legacy in a rapidly changing Japan. The film unveils the secret world of the master-apprentice relationship between these sculptors, and ultimately the path to becoming a true artist, in both skill and spirit.**



MEDI | SEPTEMBER 13 @ 7.30, 14 @ 7.45, 15 @ 7.45 **ST**, 17 – 19 @ 7.45

BLINK TWICE (15 TBC)

Zoë Kravitz | USA | 2024 | tbc'

Pan mae'r biliwnydd technoleg Slater King yn cwrdd â'r gweinydd coctels Frida yn ei gala codi arian, mae'n ei gwahodd hi i ymuno ag ef a'i deulu o ffrindiau am wyliau delfrydol ar ei ynys breifat. Wrth i bethau rhyfedd ddechrau digwydd, mae Frida yn dechrau cwestiynu ei gafael ei hun ar realiti. Gyda Channing Tatum a Christian Slater yn serennu, dyma début Zoë Kravitz fel cyfarwyddwr.

When tech billionaire Slater King meets cocktail waitress Frida at his fundraising gala, he invites her to join him and his entourage of friends for a dream vacation on his private island. As strange things start to happen, Frida begins questioning her own grasp on reality. Starring Channing Tatum and Christian Slater, this is the directorial debut from Zoë Kravitz.



MEDI | SEPTEMBER 20, 21 @ 7.00, 22 @ 7.30

THE TRUST FALL: JULIAN ASSANGE (15)

Kym Staton | Australia | 2023 | 129'

Ffilm sy'n mynd ati i archwilio ystyr ac arwyddocâd y mewnwelediadau a rannodd WikiLeaks â'r byd, ymddygiad y llywodraethau dan sylw o ganlyniad, y risg bersonol a gymerwyd gan Assange, a'r materion sylfaenol ehangach ynghylch rhyddid y wasg sy'n effeithio ar bob un ohonom. Wedi'i ffilmio dros ddwy flynedd, mae'r ffilm yn cynnwys amrywiaeth o enwogion yn ogystal â myfyrdodau gan deulu Assange. Portread manwl gan yr amddiffyniad.

Examining the meaning and significance of the insights that WikiLeaks shared with the world, the resulting behaviour of the governments involved, the personal risk taken by Assange, and the wider fundamental issues around press freedom that affect all of us. Filmed over two years, the film features an array of luminaries as well as reflections from Assange's family. A detailed portrayal from the defence.



MEDI | SEPTEMBER 20 @ 7.15*, 21 @ 8.30, 22 @ 4.00, 26 @ 2.00

GAZA: A STORY OF LOVE AND WAR (12A)

Mike Joseph | 2024 | 84'

Mae dau newyddiadurwr yn cwrdd i rannu staeon dros ddolen Zoom. Cymro yw un sy'n methu mynd i mewn i Gaza. Palestiniad yw'r llall sy'n methu dod allan. Wrth iddynt siarad, caiff hanes personol iawn Nakba Palesteina ei adrodd, o ddiarddeliadau 1948 i'r strydoedd lladd a dinasoedd pebyll yn 2024. Clywn gysylltiadau rhyfeddol yn y staeon. Yn mae eu sgwrs yn cyrraedd cwestiwn annisgwyl iawn: A yw cydfodolaeth yn bosibl?

Two journalists meet to share stories over a Zoom link. One is Welsh and unable to get into Gaza. The other is Palestinian and unable to get out. As they talk, a very personal history of the Palestinian Nakba is narrated, from the expulsions of 1948 to the killing streets and tent cities of 2024. We hear remarkable connections in the stories. Then their talk reaches a most unexpected question: Is coexistence possible?

* Yn dilyn y dangosiad ar ddydd Gwener 20 Medi cynhelir sesiwn holi ac ateb gyda chyfarwyddwr y ffilm, Mike Joseph.

*The screening on Friday 20 September will be followed by a Q&A session with the film's director Mike Joseph.



MEDI | SEPTEMBER 20 @ 7.30, 21 @ 1.15, 4.15, 7.30, 22 @ 1.15, 4.30, 7.45, 24 @ 7.30, 25 @ 7.30 **ST**, 26, 27 @ 7.30, 28, 29 @ 1.00, 4.15, 7.30

HYDREF | OCTOBER 1 @ 7.30, 2, 3 @ 7.00

WOLFS (15 TBC)

Jon Watts | UK | USA | 2024 | tbc'

Mae dau weithredwr annibynnol yn cael eu gorfodi i weithio gyda'i gilydd pan gânt eu cyflogi i guddio trosedd proffil uchel. Ill dau yn bwrw 'mlaen mewn oedran, mae George Clooney a Brad Pitt yn ddynion sy'n datrys problemau anodd ac sy'n mynnu gweithio ar eu pennau eu hunain. Hyd yn hyn. Yn gyflym mae'r sefyllfa'n mynd y tu hwnt i bob rheolaeth. Comedi llawn cyffro gydag Amy Ryan, Austin Abrams a Poorna Jagannathan hefyd.

Two lone wolves are forced to work together when they are hired to cover up a high-profile crime. George Clooney and Brad Pitt are both ageing fixers who very much work alone. Until now. Things quickly spiral out of control. Comedy action also starring Amy Ryan, Austin Abrams and Poorna Jagannathan.



MEDI | SEPTEMBER 22 @ 6.45

BLACKBIRD BLACKBIRD BLACKBERRY (15)

Elene Naveriani | Switzerland | Georgia | 2023 | 107'



A hithau'n byw mewn pentref bach yn Georgia, mae Etero, 48 oed, yn gwerthfawrogi ei rhyddid cymaint â i chacennau, ac nid yw hi byth eisiau priodi. Mae ei dewis i fyw ar ei phen ei hun yn destun llawer o glonc ymhlith ei chyd-bentrefwyr sy'n ei chael hi'n anodd credu ei bod hi'n sengl o ddewis. Pan mae'n syrthio mewn cariad â dyn, rhaid iddi bwysu a mesur ei dyhead newydd am gysylltiad emosïynol yn erbyn ei rhyddid gwerthfawr.

Living in a small Georgian village, 48-year-old Etero cherishes her freedom as much as her cakes, and never wants to marry. Her choice to live alone is the cause of much gossip among her fellow villagers who find it hard to believe that she's single by choice. When she finds herself falling for a man, she must weigh up her newfound yearning for emotional connection against her hard-won freedom.

MEDI | SEPTEMBER 24 – 26 @ 7.45

THE COMMANDANTS SHADOW (12A)

Daniela Volker | USA | Israel | Poland | UK | Germany | 2024 | 103'

Tra bod Hans Jurgen Höss yn mwynhau plentyndod hapus yn fila'r teulu yn Auschwitz, roedd y carcharor Iddewig Anita Lasker-Wallfisch yn ceisio goroesi'r gwersyll crynhoi drwg-enwog. Mae'r rhaglen ddogfen hon yn troi o gwmpas y foment hanesyddol, wyth degawd yn ddiweddarach, pan mae'r ddau'n cwrdd wyneb yn wyneb. Dyma'r tro cyntaf i ddisgynnydd un o droseddwy'r pennaf y rhyfel gwrrd â goroeswr mewn lleoliad mor breifat ac agos atoch, sef ystafell fyw Anita yn Llundain. Ynghyd â'u plant, Kai Höss a Maya Lasker-Wallfisch, mae'r pedwar prif gymeriad yn archwilio eu beichiau etifeddol gwahanol iawn.

While Hans Jurgen Höss enjoyed a happy childhood in the family villa at Auschwitz, Jewish prisoner Anita Lasker-Wallfisch was trying to survive the notorious concentration camp. At the heart of this documentary is the historic moment, eight decades later, when the two come face-to-face. This is the first time the descendant of a major war criminal meets a survivor in such a private and intimate setting, Anita's London living room. Together with their children, Kai Höss and Maya Lasker-Wallfisch, the four protagonists explore their very different hereditary burdens.



MEDI | SEPTEMBER 27, 28 @ 7.00, 29 @ 7.15
HYDREF | OCTOBER 1 @ 7.00 **ST**, 3 @ 2.00, 5, 6 @ 4.45

LEE (15)

Ellen Kuras | UK | USA | 2023 | 117'

Hanes y ffotograffydd Elizabeth Lee' Miller (Kate Winslet), model a ddaeth yn ohebydd rhyfel clodwiw i gylchgrawn Vogue yn ystod yr Ail Ryfel Byd. A hithau'n fenyw a wrthododd gael ei chofio fel model yn unig, yn groes i normau rhywedd y cyfnod, fe deithiodd Lee i'r rheng flaen ac i wersyll crynhoi Dachau er mwyn dogfennu'n ddiysgog yr erchyllterau a welodd.

Kate Winslet stars in the story of photographer Elizabeth Lee' Miller, a vogue model who became an acclaimed war correspondent for Vogue magazine during World War II. A woman who refused to be remembered only as a model, Lee travelled to the frontline and the Dachau concentration camp in defiance of the gender norms of the time to unflinchingly document the horrors that she saw.



MEDI | SEPTEMBER 27 @ 7.15, 28, 29 @ 1.15, 4.45, 7.45
HYDREF | OCTOBER 1 @ 7.15, 2 - 4 @ 6.45, 5 @ 2.00, 5.00, 8.00,
6 @ 2.00, 5.00, 8.00 **ST**, 8, 9 @ 6.45, 10 @ 2.00, 6.45

THE OUTRUN (15)

Nora Fingscheidt | UK | Germany | 2024 | 117'

Yn syth ar ôl cyfnod adsefydlu, mae Rona yn dychwelyd i Ynysoedd gwylt Orkney ar ôl mwy na degawd i ffwrdd. Mae'n datblygu cysylltiad dwfn â thirwedd ddramatig cartref ei phlentynodod wrth iddi lywio eithafion ei bywyd hyd yma - gan symud o'r lle mwyaf anghysbell i'r mwyaf trefol yn y DU ac yn ôl eto, a symud o fod yn feddwi i fod yn sobr. Yn seiliedig ar y cofiant llwyddiannus gan Amy Liptrot, mae Saoirse Ronan ar ei gorau yn rôl y brif actores.

Fresh out of rehab, Rona returns to the wild Orkney Islands after more than a decade away. She develops a deep connection with the dramatic landscape of her childhood home as she navigates the extremes of her life to date – moving from the most remote to the most urban place in the UK and back again, moving from drunk to sober. Based on the bestselling memoir by Amy Liptrot, Saoirse Ronan is “never-better” as the lead.

HYDREF | OCTOBER 4 @ 7.30, 5, 6 @ 1.15, 4.00, 7.30,
8, 9 @ 7.30, 10, 11 @ 7.45, 12 @ 1.30, 4.45, 8.15,
11 @ 2.30, 8.15, 15 @ 7.30, 16 @ 7.00,
17 @ 7.30, 25 @ 7.15 **ST**, 26 @ 7.15
TACHWEDD | NOVEMBER 5, 7 @ 7.15

JOKER: FOLIE A DEUX (15 TBC)

Todd Phillips | USA | 2024 | tbc'



Dilyniant i lwyddiant ysgubol 2019 gyda Joaquin Phoenix fel The Joker a Lady Gaga fel ei bartner, Harley Quinn. Ffilm gerddorol ond gyda'r un realaeth â'r ffilm gyntaf, wedi'i seilio'n fras ar y cymeriadau DC o'r un enw, ond wedi'i gosod mewn bydysawd gwahanol IAWN. Golwg ddiddorol ac annifyr ar gymeriadau eiconig y llyfrau comig hyn.

Sequel to the 2019 smash hit starring Joaquin Phoenix as The Joker and Lady Gaga as his Harley Quinn shaped partner in crime and muse. A musical but with the same gritty realism of the first film, loosely based on the DC characters of the same name, but placed in a VERY different universe. An intriguing and disturbing take on these iconic comic book characters.



HYDREF | OCTOBER 4 @ 7.00, 5, 6 @ 7.45, 8 @ 7.00 **ST**, 9 @ 7.00

SPEAK NO EVIL (15)

James Walkins | USA | 2024 | 110'

Mae chwarae'n troi'n chwerw pan mae teulu o America yn derbyn gwahoddiad gan deulu hyfryd o Brydain y gwnaethant gwrrd â nhw ar wyliau i ddod i ymweld â nhw am benwythnos ar eu stad wledig ddelfrydol. Mae James McAvoy yn disgleirio fel y perchennog carismatig, macho y stad a ganddo ochr dywyll. Ailwampiad ar y ffilm arswyd seicolegol o'r un enw o Ddenmarc.

Things take an ugly turn when an American family accept an invitation from a charming British family they met on holiday to come and visit them for a weekend at their idyllic country estate. James McAvoy is riveting as the charismatic, alpha-male estate owner with a dark side. A reimagining of the Danish psychological horror of the same name.



HYDREF | OCTOBER 11 @ 7.00

TWIN TOWN (18)

TAITH PEN-BLWYDD YN 25 OED | 25TH ANNIVERSARY TOUR

Yn ôl ym mis Mawrth roeddem wrth ein bodd i werthu pob tocyn ar gyfer ein dangosiad arbennig i ddatlu 25 mlynedd, a nawr mae gennym gyfle i wneud y cyfan eto, yn ogystal â sesiwn holi ac ateb gwych arall gan y cyfarwyddwr Kevin Allen.

Mae *Twin Town* yn glasuwr cwlt, a hyrddiodd sinema Gymreig i'r brif ffrwd nôl ar ddiwedd y 90au. Dyma'r ffilm a roddodd y sbotolau ar Rhys Ifans fel dawn unigryw a dangosodd ochr o ddiwylliant Cymreig nad oedd yn cael ei phortreadu'n aml ar sgriniau mawr neu fach.

We were thrilled to sell out our special 25th Anniversary screening back in March, and now we have the chance to do it all over again, as well as another fantastic Q&A from director Kevin Allen.

Twin Town is a cult classic, catapulting Welsh cinema into the mainstream back in the late 90s. It was the film that spot lit Rhys Ifans as a unique talent and it showed a side of Welsh culture rarely portrayed on screens big or small.



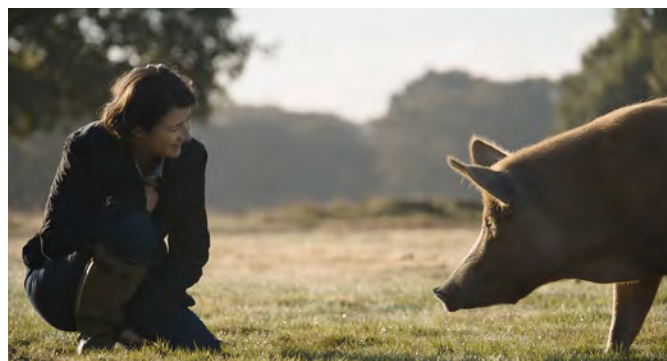
HYDREF | OCTOBER 11 @ 7.30, 12 @ 2.00, 5.00, 7.45, 13 @ 2.15, 5.00, 7.45,
15 – 18 @ 6.45, 19 @ 1.15 **R**, 4.00, 6.45, 20 @ 1.15, 4.00, 6.45 **ST**,
22 – 24 @ 6.45, 26, 27 @ 4.45, 28 – 31 @ 4.30
TACHWEDD | NOVEMBER 9 @ 4.15

TRANSFORMERS ONE (PG TBC)

Josh Cooley | USA | 2024 | tbc

Mae *Transformers One* yn ein tywys yn ôl i amser pan oedd Optimus Prime a Megatron yn ffrindiau, wedi'u huno â'i gilydd fel brodyr. Dyma stori wreiddiol y gelynnion mawr hyn, a newidiodd dynged Cybertron, planed gartref y Transformers, am byth. Yr wythfed ran ym masnachfrain y Transformers, a'r ffilm nodwedd animeiddiedig gyntaf yn y gyfres ers 1986! Gyda lleisiau Chris Hemsworth, Scarlett Johansson, Keegan-Michael Key, Jon Hamm a Steve Buscemi.

Transformers One takes us back to a time when Optimus Prime and Megatron were friends, bonded together like brothers. This is the untold origin story of these sworn enemies, who once changed the fate of Cybertron, home planet of the Transformers, forever. The eighth instalment in the Transformers franchise, and the first animated feature in the series since 1986! Featuring the voices of Chris Hemsworth, Scarlett Johansson, Keegan-Michael Key, Jon Hamm and Steve Buscemi.



HYDREF | OCTOBER 13 @ 6.00* 

HYDREF | OCTOBER 20 @ 6.15, 8.15
22, 23 @ 7.30*, 24 @ 2.00*, 7.30*, 26 @ 5.00*, 27 @ 4.00*

WILDING (PG)

David Allen | UK | 2024 | 75'

Yn seiliedig ar y llyfr llwyddiannus gan Isabella Tree o'r un enw, mae'r ffilm ddogfen *Wilding* yn adrodd stori am bâr ifanc sy'n etifeddu hen ystad fthedig ac yn rhoi eu ffydd mewn natur ar gyfer ei dyfodol. Mae'r pâr yn brwydro yn erbyn traddodiad llym wrth iddyn nhw dynnu ffensys i lawr a gadael y tir ddychwelyd i'w gyflwr naturiol, gan ymddiried mewn cymysgedd o anifeiliaid dof a gwyllt i'w adfer.

Based on Isabella Tree's best-selling book by the same title, *Wilding* is a documentary that tells the story of a young couple who bet on nature for the future of their failing, four-hundred-year-old estate. The pair battle entrenched tradition as they rip down fences and set the land back to its natural state, entrusting its recovery to a motley mix of animals both tame and wild.

*plus a filmed Q&A with writer Isabella Tree, hosted by Craig Bennett of the Wildlife Trusts and filmed at the Knepp Estate. Please note that the first screening on the 13th is a TMFS screening.

*hefyd, seswn holi ac ateb wedi'i ffilmio gyda'r awdur Isabella Tree, a'i harwain gan Craig Bennett o'r Ymddiriedolaethau Natur a'i ffilmio yn Ystad Knepp. Sylwch mai dangosiad gan Gymdeithas Ffilm Theatr Mwlidan yw'r dangosiad cyntaf ar 13eg Hydref.



HYDREF | OCTOBER 18 @ 7.00, 19, 20 @ 1.30, 4.15, 7.00, 22 – 24 @ 7.00,
25 @ 6.45, 26, 27 @ 1.30, 4.15, 28 @ 1.30, 4.15 **ST**, 29 – 31 @ 1.30 @ 4.15
TACHWEDD | NOVEMBER 3 @ 1.30, 4.15, 9 @ 1.30

THE WILD ROBOT (PG TBC)

Chris Sanders | USA | 2024 | tbc'

Antur animeiddiedig epig yn dilyn taith robot, ROZZUM unit 7134, neu 'Roz' yn fyr, wedi'i longddryllio ar ynys anghyfannedd. Mae Roz yn dysgu addasu i'r amgylchedd garw, gan feithrin perthynas ag anifeiliaid yr ynys a dod yn rhiant mabwysiadol i gyw gŵydd amddifad. Ffilm DreamWorks yn cynnwys lleisiau Lupita Nyong'o, Pedro Pascal, Bill Nighy a Catherine O'Hara.

Epig animated adventure following the journey of a robot, ROZZUM unit 7134, or 'Roz' for short, shipwrecked on an uninhabited island. Roz learns to adapt to the harsh surroundings, building relationships with the animals on the island and becoming the adoptive parent to an orphaned gosling. A DreamWorks film featuring the voices of Lupita Nyong'o, Pedro Pascal, Bill Nighy and Catherine O'Hara.



HYDREF | OCTOBER 25 – 27 @ 7.30, 28 @ 7.15, 29 @ 7.15 **ST**, 30, 31 @ 7.15

SALEM'S LOT (15 TBC)

Gary Dauberman | USA | 2024 | tbc'

Fersiwn ffilm y bu disgwyl mawr amdani o nofel a chyfres deledu gan Stephen King. Mae'r awdur Ben Mears yn dychwelyd i'w gartref, Jerusalem's Lot, yn chwilio am ysbrydoliaeth, ac yn dod o hyd i rywbeth annisgwyl iawn: mae fampir yn ysglyfaethu trigolion ei dref enedigol. Mae'n ymuno â chriw i geisio amddiffyn y dref.

Hotly anticipated film version of a Stephen King novel and TV miniseries. Author Ben Mears returns to his home of Jerusalem's Lot seeking inspiration, and finding something very unexpected: his hometown folk are being preyed on by a vampire. He joins forces with a ragtag group to try and defend the town.



HYDREF | OCTOBER 26 – 31 @ 7.00

KNEECAP (18)

Rich Peppiatt | Ireland | 2024 | 105'

Ffilm fywgraffiadol y band, sy'n chwedlonol ar ôl un albwm yn unig. Y ddrama gomedi hon yw stori wreiddiol y triawd hip hop anarchaidd o Belfast wrth iddynt frwydro yn erbyn imperialaeth Brydeinig a brwydro dros yr iaith Wyddeleg. Daw tynged â JJ, yr athro o Belfast, i fyd y "rhacs" Naoise a Liam Og. Gan rapio yn eu Gwyddeleg brodorol, maen nhw'n arwain mudiad i achub eu mamiaith. Anarferol a gwfreiddiol.

Biopic of the band, already legends after just one album. This comedy drama is the origin story of the anarchic Belfast hip hop trio as they rail against British imperialism and fight for the Irish language. Fate brings Belfast teacher JJ into the orbit of self-confessed, low life scum' Naoise and Liam Og. Rapping in their native Irish, they lead a movement to save their mother tongue. Outlandish and exhilarating.



HYDREF | OCTOBER 27 @ 6.30

DRIVING MUM (12A)

Hilmar Oddsson | Estonia | Iceland | 2024 | 113'

Mae marwolaeth mam Jon yn ei orfodi i fynd ar daith gyda'i chorff. A hithau wedi'i rhoi i eistedd yn sedd gefn ei gar, mae'n rhaid iddo gyflawni ei dymuniad olaf i gael ei chladdu gartref, sef pentref anghysbell yng Ngwlad yr Iâ ar ben arall y wlad o ble bu farw. Mae Bresnef y ci yn gwmni iddo ar y daith ffordd, er nad oes gan fam ormesol Jon lai i ddweud nawr ei bod hi wedi marw.

The death of Jon's mother forces him to take a journey with her corpse. Propped up in the backseat of his car he must fulfil her dying wish to be buried at home, a remote Icelandic village across the country from where she died. Bresnef the dog provides company on the road trip, though Jon's hectoring mother has no more less to argue about now that she has died.





TACHWEDD | NOVEMBER 1 – 3 @ 2.00, 4.45, 7.30, 5 @ 7.30, 6 @ 7.30 **ST**,
7, 8 @ 7.30, 9 @ 1.45, 4.45, 7.30, 10 @ 2.00, 4.45, 7.30, 12, 13 @ 7.30, 14 @
2.00, 7.30

SMALL THINGS LIKE THESE (TBC)

Tim Mielants | Ireland | Belgium | USA | 2024 | TBC'

Ym 1985, mae'r tad ymroddedig Bill Furlong yn darganfod y cyfrinachau annifyr sy'n llechu o fewn muriau'r lleiandy lleol. Yn y ffilm hon sydd wedi'i haddasu o'r nofel glodfawr gan Claire Keegan o'r un enw, mae Cillian Murphy yn chwarae rhan Bill, dyn sy'n gweld erchyllterau'r Golchdai Magdalene â'i lygad ei hun mewn stori o'r gorffennol diweddar na fyddai allan o le mewn stori gan Dickens.

In 1985, devoted father Bill Furlong discovers the disturbing secrets held within the walls of the local convent. Adapted from the much admired Claire Keegan novel of the same name, Cillian Murphy plays Bill, a man bearing witness to the horrors of the Magdalene Laundries in a tale from the recent past that wouldn't be out of place in a Dickens tale.



TACHWEDD | NOVEMBER 3 @ 7.00, 5 @ 7.00 **ST**, 6 @ 7.15, 7 @ 2.00, 7.00

MEGALOPOLIS (12A TBC)

Francis Ford Coppola | USA | 2024 | tbc'

Dehongliad Francis Ford Coppola o wrthdaro yn America fodern ddychmygol, wrth i ddau lu gwrthwynebol wrthdaro dros sut i ailadeiladu New Rome ar ôl trychineb dinistriol. Mae Cesar (Adam Driver) yn bensaer gweledigaethol sy'n ceisio symud tuag at ddyfodol iwtopaidd, delfrydyddol, ac mae ei wrthwynebydd, y Maer llygredig Franklyn Cicero (Giancarlo Esposito), yn parhau i fod yn ymroddedig i gadw status quo atchweliadol, gan barhau â thrachwant, diddordebau arbennig, a rhyfela partisan. Gyda Shia LaBeouf, Aubrey Plaza, Dustin Hoffman, Jon Voight, Laurence Fishburne.

Francis Ford Coppola's depiction of conflict in an imagined modern America, as two opposing forces clash over how to rebuild New Rome after a devastating disaster. Cesar (Adam Driver) is a visionary architect who seeks to move towards a utopian, idealistic future, and his opposition, the corrupt Mayor Franklyn Cicero (Giancarlo Esposito), remains committed to a regressive status quo, perpetuating greed, special interests, and partisan warfare. Also starring Shia LaBeouf, Aubrey Plaza, Dustin Hoffman, Jon Voight, Laurence Fishburne.



TACHWEDD | NOVEMBER 8 @ 6.45, 9, 10 @ 1.15, 4.00, 6.45, 12 – 14 @ 6.45

PADDINGTON IN PERU (PG TBC)

Dougal Wilson | UK | France | 2024 | tbc'

Mae'r annwyl Paddington Bear a'i deulu mabwysiedig, y teulu Brown yn dychwelyd. Y tro hwn maen nhw'n mynd ar antur i ymweld â modryb Paddington, Lucy, ym Mheriw. Ond yng nghoedwig law'r Amazon a mynyddoedd Periw, mae cyn hir mae amgylchiadau'n eu harwain at anffawd. Ben Whishaw yw llais Paddington, gyda'r sêr Hugh Bonneville, Emily Mortimer, Julie Walters, Jim Broadbent, Madeleine Harris, Samuel Joslin, Olivia Colman ac Antonio Banderas.

Beloved Paddington Bear and his adopted family, the Browns return. This time they head out on an adventure to visit Paddington's aunt Lucy in Peru. But in the Amazon rainforest and mountains of Peru, circumstances soon lead them towards misadventure. Starring Ben Whishaw as the voice of Paddington, with Hugh Bonneville, Emily Mortimer, Julie Walters, Jim Broadbent, Madeleine Harris, Samuel Joslin, Olivia Colman and Antonio Banderas.



TACHWEDD | NOVEMBER 8 @ 7.15, 9 @ 7.00, 12 @ 7.15 **ST**, 13 @ 7.15

VENOM: THE LAST DANCE (15 TBC)

Kelly Marcel | USA | UK | Mexico | 2024 | tbc'

Mae Tom Hardy yn dychwelyd fel y newyddiadurwr Eddie Brock a'i bartner estron symbiotig Venom. Dros amser, mae'r ddau wedi dysgu gweithio gyda'i gilydd i gydlynu ymosodiadau ar eu gelynion yn well. Maen nhw ar ffo, y naill a'r llall yn cael eu hela gan eu bydoedd eu hunain. Wrth i'r rhwyd gau o'u cwmpas, mae'r ddeuawd yn cael eu gorfodi i wneud penderfyniad ofnadwy sy'n golygu un ddawns olaf i Venom ac Eddie.

Tom Hardy returns as journalist Eddie Brock and his symbiotic alien sidekick Venom who, overtime the two have learnt to work together to better coordinate attacks on their enemies. We find them on the run, each hunted by their own worlds. As nets close in, the duo are forced to make a devastating decision that will mean curtains down for Venom and Eddie's last dance.



TACHWEDD | NOVEMBER 10 @ 6.30

WERCKMEISTER HARMONIES (12A)

Bela Tarr | Agnes Hranitzky | Hungary | Italy | Germany |
France | 2000 | 139'



Mewn cyfnod anhysbys mewn pentref dienw, lle, un diwrnod, mae syrzas ddirgel (gyda morfil enfawr wedi'i stwffio, a ffigwr cysgodol tebyg i ddemagog o'r enw'r Tywysog) yn cyrraedd ac yn deffro rhyw fath o wallgofrwydd yn y dinasyddion, sy'n cynyddu hyd nes nad oes modd osgoi trais. Dyma i chi ddameg gyfareddol o gwmp cymdeithasol sy'n enigma o atseiniad gwledol, athronyddol a chyfriniol rhagorol.

In an unknown time in an unnamed village, where, one day, a mysterious circus (complete with an enormous stuffed whale and a shadowy, demagogue-like figure known as the Prince) arrives and appears to awaken a kind of madness in the citizens, that builds inexorably toward violence. Mesmeric parable of societal collapse is an enigma of transcendent visual, philosophical, and mystical resonance.

CYMDEITHAS FFILM THEATR MWLDAN THEATR MWLDAN FILM SOCIETY

Mae'n dangos ffilmiau arthouse ar nos Sul o fis Medi i fis Ebril (15 ffilmiau).

Mae opsiynau o ran tocynnau yn cynnwys:

Tocyn tymor llawn: £40

Tocyn tymor llawn - Pris Cynnar: £35

(Ar gael i brynu o 1 - 8 Medi)

Tocyn Cynilo Blynyddol: £27

Tocyn Tymor Llawn Person Ifanc: £25

Talu wrth Fynd: mynediad sinema safonol, dim angen aelodaeth.

Dewch draw i gael eich ysbrydoli!

Anfonwch e-bost atom yn TMFSfilms@gmail.com i ymuno â'n rhestr bostio, i gael nodyn atgoffa am y gostyngiad Prynu'n Gynnar ac i dderbyn manylion ar gyfer ein tymor 2024/2025.

Ewch i Mwldan.co.uk i brynu tocynnau neu ffoniwch y Swyddfa Tocynnau (01239 621 200)

Screening arthouse films on Sunday evenings from September to April (15 films).

Ticket options include:

Full Member season ticket: £40

Early Bird Full member season ticket: £35

(Available to buy from 1 - 8 September 2024)

Annual Ticket Saver: £27

Young Person's Full Member season ticket: £25

Pay as You Go: standard cinema entry, no membership required.

Come along and be inspired!

Email us at TMFSfilms@gmail.com to join our mailing list, get a reminder about the Early Bird discount and receive details for our 2024/2025 season

Visit mwldan.co.uk to purchase tickets or call the box office (01239 621 200)

GRWPIAU A DOSBARTHADAU CYMUNEDOL COMMUNITY GROUPS AND CLASSES

DREAMS DANCE SCHOOL

Ballet/Tap/Jazz/Street/DDMIX
Wythnosol / Weekly
Dydd Mawrth / Dydd Sadwrn
Tuesday / Saturday

Victoria: 07581 186 634

dreamsdance@hotmail.co.uk

Dosbarthiadau dawns ar gyfer hwyl neu arholiadau o dan faes llafur RAD ac IDTA. Cynigir pob genre o ddawnsio i blant bach 1 oed+ i oedolion 70+ oed. Opsiynau grwp ac 1:1 ar gael.

Dance classes for fun or examination under the RAD & IDTA syllabus. All genres offered from dancing tots 1yrs+ to adult 70yrs+. Group and 1:1 options available.

PANACHE DANCE FITNESS

Wythnosol / Weekly - Dydd Llun / Monday (7.15pm)

Sarah Rouet: 07359 080 672

Sesiwn ymarfer corff arddull showbiz, sy'n addas ar gyfer pob gallu dawns/ffitrydd, gyda thraciau sain eiconig o sioeau llwyfan a'r sgrin.

A showbiz style full body workout, suitable for all dance/fitness abilities, featuring iconic soundtracks from stage and screen.

PILATES & PURESTRETCH CLASSES

Wythnosol / Weekly
Nos Llun / Monday (6.00pm)
Nos Iau / Thursday (6.30pm)

Amanda: 07733 226 733

amanda@firestonepilates.co.uk

Eisiau rhoi awr i chi'ch hun bob wythnos i ganolbwyntio ar eich cryfder craidd, hyblygrwydd a chydbwysedd? Hoffech chi ddysgu sut mae'ch corff yn ymateb i symud, gwrando arno a gweithio gydag ef mewn ffordd ystyriol?

Fancy giving yourself an hour each week to focus on your core strength, flexibility and balance? Would you like to learn how your body responds to movement, listen to it and work with it in a mindful way?

INCLUSIVE DANCE

Wythnosol / Weekly - Wednesday / Dydd Mercher (10:30am)

Ashley: 01267 243815 / ashley@acgc.co.uk

Dosbarth Dawns i oedolion ag anableddau dysgu a/neu awtistiaeth. **Dance Class for adults with learning disabilities and/or autism.**

VOCAL VIBES

Wythnosol / Weekly | Dydd Gwener / Friday (11.00am - 12.30pm)

Helen: 07557 997 696 / hj_bowman@hotmail.com

Rhyddhewch eich llais naturiol. Ymunwch â ni am ganu dyrchafol, grwp cynhwysol, croeso i bawb. Caneuon obedwar ban byd, yn cael eu dysgu yn ôl y glust mewn harmonïau gogoneddus.

Free your natural voice, Join us for uplifting singing. Inclusive group, everyone welcome. Songs from around the world, all taught by ear in glorious harmonies.

CARDIGAN THEATRE (AMATEUR THEATRE GROUP)

Wythnosol / Weekly - Nos Fawrth / Tuesday

Rose Pembroke: cardigantheatre@gmail.com

Cyfarfodydd wythnosol ar gyfer ymarferion, darllen dramâu a gweithdai. Ar hyn o bryd rydym yn perfformio 2 sioe'r flwyddyn yn y Mwldan, drama yn y gwanwyn a phantomeim Nadolig.

Weekly meetings for rehearsals, play readings and workshops. We currently perform 2 shows a year at Mwldan, a spring play and a Christmas pantomime.

NERTH GROWTH, FITNESS & HEALTH

Wythnosol / Weekly

ZUMBINI

Dydd Mawrth / Tuesday (1.00pm)

Dosbarth cerddoriaeth a symud i blant 0-4 oed a'r rheiny sy'n gofalu amdanynt.

A music and movement class for children aged 0-4 years to experience with their caregiver.

ZUMBA KIDS

Dydd Mawrth / Tuesday

(4.00pm 4 – 6 oed / years)

(5.00pm 7 – 11 oed / years)

Hyder, datblygiad a lles.

Confidence, development and wellbeing.

ZUMBA

Nos Fawrth / Tuesday (6.00pm) Addas ar gyfer pob lefel o ffitrwydd a gallu.

Suitable for all fitness levels and abilities.

ZUMBA GOLD

Dydd Mawrth / Tuesday (2.00pm)

Dosbarth newydd i'r rheiny dros 50 oed a dechreuwyd.

A new class for over 50's and beginners.

Samantha Ackerman:

07533 646 872 / contact@nerth.org / www.nerth.org

CÔR TEIFI

Wythnosol / Weekly - Dydd Llun / Monday (7pm - 9pm)

Cyfarwyddwr / Director: Philip Wilson.

07805 214391 / info@cor-teifi.org.uk

Côr cymunedol yn canu soprano, alto, tenor, bas, clasurol a chyfoes.

A community choir singing soprano, alto, tenor, bass, classical and contemporary.

IMPRO & PLAY

Misol / Monthly, Dydd Sul / Sunday (12-1pm)

(8 Medi / September, 20 Hydref / October,

17 Tachwedd / November, 8th Rhagfyr / December)

OEDOLION/ ADULTS

A DDEWCH CHI ALLAN I CHWARAE?

Sut deimlad yw ymddiried ynoch chi eich hun a gadael i fynd yn go iawn? Gweithdai ysgafn, llawn hwyl sy'n defnyddio theatr gorfforol, gweithgarwch byrfyfyr a gemau i ddeffro'r plentyn y tu fewn i chi.

COME OUT AND PLAY?

What does it feel like to trust yourself and really let go?

Light, fun-filled workshops that use physical theatre, improvisation & games to activate the kid within you.

Galw heibio / Drop in - £10

Bloc / Block (4 wythnos / sessions) - £24

Alex Crompton:

everything@alexcrampton.com

BIODANSA

Sesiynau pythefnosol / Fortnightly sessions

Dydd Mercher / Wednesday (6pm – 8pm)

Yn dechrau 11 Medi / Starting 11 September.

Dave / Shona 07794 682092

dave@lovebiodanza.co.uk / shona@lovebiodanza.co.uk

Dewch i gwrdd ac ymgysylltu ag eraill trwy ddawns bywyd.

Meet and engage with others through the dance of life.

PILATES

Wythnosol / Weekly - Dydd Gwener / Friday

Francesca Tebbutt: 07973 854 942 /

tebbutthealthandhealing@gmail.com

GWYBODAETH GYFFREDINOL GENERAL INFORMATION

ARCHEBU TOCYNNAU BOOKING TICKETS

Gallwch archebu tocyntau 24/7 ar ein gwefan, neu dros y ffôn rhwng 12-8pm dydd Mawrth - dydd Sul (a dydd Llun yn ystod gwyliau ysgol a gwyliau cyhoeddus) ar 01239 621 200. Gadewch neges os nad oes ateb a byddwn yn eich ffonio yn ôl cyn gynted ag y gallwn.

Gallwch archebu tocyntau ar gyfer digwyddiadau byw heb dalu, ond fe'u cedwir ar eich cyfer am 7 niwrnod yn unig ac wedi hynny byddant yn cael eu rhyddhau i'w hail werthu. Rhaid talu ar unwaith ar gyfer archebion sydd o fewn 7 niwrnod o ddyddiad y sioe. Nid oes modd archebu heb dalu ar gyfer perfformiadau sinema.

Argymhellwn eich bod yn archebu eich tocyntau o flaen llaw pryd bynnag bo'n bosibl - yna gallwn gysylltu â chi os bydd unrhyw amgylchiadau annisgwyl yn codi.

You can book tickets 24/7 on our website, or in person/ by phone between 12-8pm Tuesday – Sunday (and on Mondays during school and public holidays) on 01239 621 200. Please leave a message if there is no reply and we will call you back as soon as we can.

Seats for live events may be reserved without payment but will only be held for you for 7 days after which time they will be released for resale. Payment must be made immediately for bookings within 7 days of a show. Reservations without payment are not possible for cinema performances.

We would recommend that you pre-book your tickets whenever possible – we can then contact you in the event of any unforeseen circumstances.

DYRANNU SEDDI A CHEISIADAU O RAN SEDDI SEAT ALLOCATION AND SEATING REQUESTS

Rhowch wybod i ni am unrhyw fater mynediad a all fod gennych wrth i chi archebu. Byddwch yn cael cyfle i roi'r wybodaeth hon ar-lein drwy'r broses archebu ar-lein, neu gallwch ddweud wrth aelod o staff pan fyddwch chi'n archebu dros y ffôn. Gwnawn ein gorau i ddarparu ar gyfer unrhyw ofynion (er na ellir sicrhau hyn bob tro).

Please let us know of any access issues or seating requests via the comments field during the online booking process, or you can tell a member of staff when you book over the phone. We will do our best to accommodate (although this cannot always be guaranteed).

AD-DALU A CHYFNEWID REFUNDS + EXCHANGES

• Os ydych ddim yn medru mynychu perfformiad neu darllediad yr ydych wedi archebu tocyntau ar ei chyfer, fe allwch ddod yn ol a'ch tocyntau tan hyd at saith diwrnod cyn dyddiad y perfformiad ac fe fyddwn yn gallu rhoi nodyn credyd llawn atoch.

• Neu gallwn newid eich tocyntau ar gyfer perfformiad mwy cyfleus o'r un sioe neu ffilm, neu mewn achosion o dy llawn fe allwn gwneud ein gorau i ail-werthu eich tocyntau (ni allwn sicrhau y bydd hyn yn bosibl).

• Fe gynghorwn i chi gymryd sylw o dystysgrifau oedran ffilmiau i osgoi gael eich siomi, ni ellir gynnig ad-daliad os brynwch docyntau ar gyfer ffilm nad ydych o oedran i weld.

• Ni all tocyntau credyd/anrheg gael ei gyfnwied ar gyfer arian parod. Os caiff unrhyw eitem a gafodd ei brynu gyda thaleb ei gyfnwied neu ei ad-dalu, caiff unrhyw arian sy'n ddyledus ei ychwanegu at y balans ar y daleb.

• If for any reason you are unable to make a performance or screening you have booked for, your tickets can be returned up to seven days in advance of a performance and we will issue you with a full credit note.

• Alternatively, we can exchange your tickets for a more suitable performance of the same show or film, or in the event of a full house we will do our best to re-sell your tickets for you (although this cannot be guaranteed).

• Customers are advised to take note of the film classification ratings to avoid disappointment, as no refund can be made if they purchase tickets for a film they are not old enough to view.

• Gift/credit vouchers cannot be exchanged for cash. If any product purchased with a voucher is exchanged or refunded, any money owing will be added to the balance on the gift/credit voucher.

HYGYRCHEDD ACCESS

Gallwn ddarparu ein rhaglenni i chi mewn print bras ar gais.

Mae gwybodaeth lawn am ein cyfleusterau a dangosiadau/digwyddiadau hygyrch ar gael ar ein gwefan neu drwy siarad â'n swyddfa docyntau.

Mae gennym fynediad da i bobl anabl, rydym yn cynnal dangosiadau rheolaidd ydag isdeitlau ac mae gennym gyfleusterau ar gyfer sain ddisgrifio ac atgyfnerthu sain.

Rydym yn cynnig dangosiadau hamddenol a byddem hefyd wrth ein bodd yn clywed gennych os ydych eisiau gwybod am unrhyw un o'r uchod, os ydych yn rhan o grŵp lleol, neu os hoffech awgrymu unrhyw fathau eraill o ddangosiadau hygyrch neu welliannau i'n cyfleusterau/gwasanaethau. Cysylltwch â ni drwy ein swyddfa docynnau ar 01239 621 200 neu e-bostiwrch boxoffice@mwldan.co.uk, neu siaradwch ag un o'n tîm

We can provide our brochures to you in large print on request.

Full information about our facilities and accessible screenings/events can be found on our website or by speaking to our box office.

We have good disabled access, run regular subtitled screenings and have facilities for audio description and reinforcement. We offer relaxed screenings and would also love to hear from you if you want to know about any of the above, are part of a local group, or if you'd like to suggest any other types of accessible screenings or improvements to our facilities/services. Please get in touch via our box office on 01239 621 200 or email boxoffice@mwldan.co.uk, or speak to one of our team.



Rydym yn rhan o gynllun cymorth hygyrchedd cenedlaethol Hynt, gweler www.hynt.co.uk. Os oes gennych nam neu ofyniad mynediad penodol, neu os ydych yn gofalu am rywun fel hyn, yna mae Hynt yn berthnasol i chi.

Mae Hynt yn gynllun cenedlaethol sy'n gweithio gyda theatrau a chanolfannau celfyddydau ar draws Cymru i wneud pethau'n glir ac yn gyson. Mae hefyd yn adnodd i unrhyw un sydd angen gwybodaeth benodol

am fynediad i gynllunio ymweliad â theatr. Mae gan rai â cherdyn Hynt hawl i gael tocy'n rhad am ddim i gynorthwydd personol neu ofalwydd ym mhob theatr a chanolfan gelfyddydau sy'n rhan o'r cynllun. Ewch i www.hynt.co.uk am wybodaeth ac arweiniad am y cynllun. Gallwch hefyd cael gwybod os gallwch chi neu'r person rydych yn gofalu amdano/i ymuno â'r cynllun a chwblhau fffurflen gais.

We are part of the national accessibility support scheme Hynt, see www.hynt.co.uk. If you have an impairment or specific access requirement, or care for someone that does, then Hynt applies to you.

Hynt is a national access scheme that works with theatres and arts centres in Wales to make sure there is a consistent offer available for visitors with an impairment or specific access requirement, and their Carers or Personal Assistants.

It's also a resource for anyone who needs specific access information to plan a trip to the theatre. Hynt cardholders are entitled to a ticket free-of-charge for a personal assistant or carer at all the theatres and arts centres participating in the scheme. Visit www.hynt.co.uk for information about the scheme. You can also find out whether you or the person you care for are eligible to join the scheme and complete an application form.

GWIRFODDOLI VOLUNTEERING

Rydym yn chwilio am wirfoddolwyr (16+) i ymuno â'n tîm, i dywys a helpu gyda thasgau eraill. Mae'r manteision yn cynnwys tocy'n rhad ac am ddim i ffilimiau a digwyddiadau'r Mwldan - mae'n ffordd wych o gwrdd â phobl newydd a gwyltio pethau am ddim! I ddysgu mwy am ddod yn wirfoddolwr, cysylltwch â Jasmine Revell, Rheolwr Gweithrediadau jasmine@mwldan.co.uk

We're looking for volunteers (16+) to join our team, ushering and helping out with other jobs. Perks include free tickets to Mwldan films and events - it's a great way to meet new people and see things for free! To learn more about becoming a volunteer, please contact Jasmine Revell, Operations Manager jasmine@mwldan.co.uk

EDRYCH AM LLE I GWRDD? LOOKING FOR A SPACE TO MEET?

Mae gennym amrywiaeth eang o gyfleusterau ar gael i'w hurio. Yn gyfarfod untro, yn ddosbarth wythnosol rheolaidd, yn gynhadledd gyda ystafelloedd ymneilltuo ar gyfer gweithdai, neu yn lleoliad hirdymor i fusnes, gallwn gynnig rhywbeth sy'n gweddu at eich anghenion. Cysylltwch â Victoria Goddard, Rheolwr Cyffredinol y Mwldan am argaeledd a phrisiau victoria@mwldan.co.uk

We have a wide range of facilities for hire. Whether it's a one-off meeting, a regular weekly class, a conference with workshop breakout spaces, or a long-term business location, we can offer something to suit your needs. Contact Victoria Goddard, Mwldan's General Manager for availability and prices victoria@mwldan.co.uk

Rydym yn darparu'r canlynol i wneud eich ymweliad yn fwy cyfforddus: systemau awyru gwell, glanhau gwell, hylif diheintio dwylo, cymorth mynediad, opsiynau llogi preifat ar gyfer ffrindiau a theulu, ... a thîm staff cyfeillgar a chymwynasgar iawn i ofalu amdanoch chi!
We continue to provide the following to make your visit more comfortable: enhanced ventilation systems, enhanced cleaning, hand sanitising, contactless payments, access help, private hire options for friends and family ... and a friendly and very helpful staff team to look after you!

DYDDIADUR DIARY

AWST | AUGUST

Gwe 16 Fri

- ① 12.45 3.45 Trap (15 tbc)
6.45 Inside Out 2 (U)
- ② 12.15 Despicable Me 4 (U)
2.45 Kensuke's Kingdom (PG)
5.15 Harold (PG tbc) 7.45 Trap (15 tbc)
- ③ 1.00 4.00 7.00 Alien: Romulus (15)

Sad 17 Sat

- ① 12.45 3.45 Trap (15 tbc) 6.45 Inside Out 2 (U)
- ② 12.15 Despicable Me 4 (U)
2.45 Kensuke's Kingdom (PG)
5.15 Harold (PG tbc) 7.45 Trap (15 tbc)
- ③ 1.00 4.00 7.00 Alien: Romulus (15)

Sul 18 Sun

- ① 12.45 3.45 Trap (15 tbc) 6.45 Inside Out 2 (U)
- ② 12.15 Despicable Me 4 (U)
2.45 Kensuke's Kingdom (PG)
5.15 Harold (PG tbc) 7.45 Trap (15 tbc)
- ③ 1.00 4.00 7.00 ⑤ Alien: Romulus (15)

Llun 19 Mon

- ① 12.45 3.45 Trap (15 tbc) 6.45 Inside Out 2 (U)
- ② 12.15 Despicable Me 4 (U)
2.45 Kensuke's Kingdom (PG)
5.15 Harold (PG tbc) 7.45 Trap (15 tbc)
- ③ 1.00 4.00 7.00 Alien: Romulus (15)

Maw 20 Tue

- ① 12.45 3.45 Trap (15 tbc)

- 6.45 Inside Out 2 (U)
- ② 12.15 Despicable Me 4 (U)
2.45 Kensuke's Kingdom (PG)
5.15 Harold (PG tbc) 7.45 Trap (15 tbc)
- ③ 1.00 4.00 7.00 Alien: Romulus (15)

Mer 21 Wed

- ① 12.45 3.45 Trap (15 tbc)
6.45 Inside Out 2 (U)
- ② 12.15 Despicable Me 4 (U)
2.45 Kensuke's Kingdom (PG)
5.15 Harold (PG tbc) 7.45 Trap (15 tbc)
- ③ 1.00 4.00 7.00 Alien: Romulus (15)

Iau 22 Thu

- ① 12.45 3.45 Trap (15 tbc)
6.45 Inside Out 2 (U)
- ② 12.15 Despicable Me 4 (U)
2.45 Kensuke's Kingdom (PG)
5.15 Harold (PG tbc) 7.45 Trap (15 tbc)
- ③ 1.00 4.00 7.00 Alien: Romulus (15)

Gwe 23 Fri

- ① 2.30 Kensuke's Kingdom (PG)
5.00 Harold (PG tbc)
7.30 It Ends With Us (12A tbc)
- ② 2.15 Despicable Me 4 (U)
4.45 Inside Out 2 (U)
7.15 Deadpool & Wolverine (15)
- ③ 1.00 4.00 7.00 Alien: Romulus (15)

Sad 24 Sat

- ① 2.30 Kensuke's Kingdom (PG)
5.00 Harold (PG tbc)
7.30 It Ends With Us (12A tbc)
- ② 2.15 Despicable Me 4 (U)
4.45 Inside Out 2 (U)
7.15 Deadpool & Wolverine (15)

- ③ 1.00 4.00 7.00 Alien: Romulus (15)

Sul 25 Sun

- ① 2.30 Kensuke's Kingdom (PG)
5.00 Harold (PG tbc)
7.30 It Ends With Us (12A tbc)
- ② 2.15 Despicable Me 4 (U)
4.45 Inside Out 2 (U)
7.15 Deadpool & Wolverine (15)
- ③ 1.00 4.00 7.00 Alien: Romulus (15)

Llun 26 Mon

- ① 2.30 Kensuke's Kingdom (PG)
5.00 Harold (PG tbc)
7.30 It Ends With Us (12A tbc)
- ② 2.15 Despicable Me 4 (U)
4.45 Inside Out 2 (U)
7.15 Deadpool & Wolverine (15)
- ③ 1.00 4.00 7.00 Alien: Romulus (15)

Maw 27 Tue

- ① 2.30 Kensuke's Kingdom (PG)
5.00 Harold (PG tbc)
7.30 ⑤ It Ends With Us (12A tbc)
- ② 2.15 Despicable Me 4 (U)
4.45 Inside Out 2 (U)
7.15 Deadpool & Wolverine (15)
- ③ 1.00 4.00 7.00 Alien: Romulus (15)

Mer 28 Wed

- ① 2.30 Kensuke's Kingdom (PG)
5.00 Harold (PG tbc)
7.30 It Ends With Us (12A tbc)
- ② 2.15 Despicable Me 4 (U)
4.45 Inside Out 2 (U)
7.15 Deadpool & Wolverine (15)
- ③ 1.00 4.00 7.00 Alien: Romulus (15)

Iau 29 Thu

- 1 2.30 Kensuke's Kingdom (PG)
5.00 Harold (PG tbc)
7.30 It Ends With Us (12A tbc)
- 2 2.15 Despicable Me 4 (U)
4.45 Inside Out 2 (U)
7.15 Deadpool & Wolverine (15)
- 3 1.00 4.00 7.00 Alien: Romulus (15)

Gwe 30 Fri

- 1 2.15 Kensuke's Kingdom (PG)
4.45 Despicable Me 4 (U) 7.15 Twisters (12A)
- 2 2.00 Despicable Me 4 (U) 4.30 Inside Out 2 (U)
7.00 Borderlands (12A)
- 3 2.30 Harold (PG tbc)
5.00 Hundreds of Beavers (12A)
7.45 Thelma (12A)

Sad 31 Sat

- 1 2.15 🎬 Kensuke's Kingdom (PG)
4.45 Despicable Me 4 (U) 7.15 Twisters (12A)
- 2 2.00 Despicable Me 4 (U)
4.30 Inside Out 2 (U) **7.00 André Rieu**
- 3 2.30 Harold (PG tbc) 5.00 Thelma (12A)
7.45 Hundreds of Beavers (12A)

MEDI | SEPTEMBER

Sul 1 Sun

- 1 2.15 Kensuke's Kingdom (PG)
4.45 Despicable Me 4 (U) 7.15 Twisters (12A)
- 2 **2.00 André Rieu** 5.45 Inside Out 2 (U)
8.15 Borderlands (12A)
- 3 2.30 Harold (PG tbc) 5.00 Thelma (12A)
7.45 Hundreds of Beavers (12A)

Llun 2 Mon

- 1 2.15 Kensuke's Kingdom (PG)

- 2 4.45 Despicable Me 4 (U) 7.15 Twisters (12A)
2.00 Despicable Me 4 (U)
- 3 4.30 Inside Out 2 (U) 7.00 Borderlands (12A)
2.30 Harold (PG tbc)
5.00 Hundreds of Beavers (12A)
7.45 🎬 Thelma (12A)

Maw 3 Tue

- 1 2.15 Kensuke's Kingdom (PG)
4.45 Despicable Me 4 (U) 7.15 Twisters (12A)
- 2 2.00 Despicable Me 4 (U)
4.30 Inside Out 2 (U) 7.00 Borderlands (12A)
- 3 2.30 Harold (PG tbc)
5.00 Hundreds of Beavers (12A)
7.45 Thelma (12A)

Mer 4 Wed

- 1 7.15 Twisters (12A)
- 2 7.00 🎬 Borderlands (12A)
- 3 7.30 Hundreds of Beavers (12A)

Iau 5 Thu

- 1 2.00 Thelma (12A) 7.15 Twisters (12A)
- 2 **7.00 NT Live: Present Laughter**
- 3 7.30 Hundreds of Beavers (12A)

Gwe 6 Fri

- 1 7.15 Beetlejuice Beetlejuice (12A tbc)
- 2 7.00 Fly Me To The Moon (12A)
- 3 7.30 The Crow (15 tbc)

Sad 7 Sat

- 1 1.45 Despicable Me 4 (U)
4.15 7.15 Beetlejuice Beetlejuice (12A tbc)
- 2 **2.00 NT Live: Present Laughter**
6.45 Fly Me To The Moon (12A)
- 3 2.15 Beetlejuice Beetlejuice (12A tbc)
5.15 Inside Out 2 (U) 7.45 The Crow (15 tbc)

Sul 8 Sun

- 1 1.45 Despicable Me 4 (U)
4.15 7.15 Beetlejuice Beetlejuice (12A tbc)
- 2 **2.00 André Rieu** 6.15 🎬 Perfect Days (PG)
- 3 2.15 Beetlejuice Beetlejuice (12A tbc)
5.15 🎬 Inside Out 2 (U)
7.45 The Crow (15 tbc)

Llun 9 Mon

AR GAU | CLOSED

Maw 10 Tue

- 1 7.15 Beetlejuice Beetlejuice (12A tbc)
- 2 **6.30 RB & O: The Marriage of Figaro**
- 3 7.30 🎬 The Crow (15 tbc)

Mer 11 Wed

- 1 7.15 🎬 Beetlejuice Beetlejuice (12A tbc)
- 2 7.00 Fly Me To The Moon (12A)
- 3 7.30 The Crow (15 tbc)

Iau 12 Thu

- 1 **2.00 NT Live: Present Laughter**
7.15 Beetlejuice Beetlejuice (12A tbc)
- 2 **7.00 NT Live: Prima Facie (15)**
- 3 7.30 The Crow (15 tbc)

Gwe 13 Fri

- 1 7.15 Beetlejuice Beetlejuice (12A tbc)
- 2 7.00 Carving The Divine (tbc)
- 3 7.30 Blink Twice (15 tbc)

Sad 14 Sat

- 1 2.30 Kensuke's Kingdom (PG)
5.00 8.00 Beetlejuice Beetlejuice (12A tbc)
- 2 **2.00 O Genarth i'r Môr / From Cenarth to the Sea**
5.30 Despicable Me 4 (U)

- 8.15 Carving The Divine (tbc)
- 🕒 2.15 Beetlejuice Beetlejuice (12A tbc)
- 5.15 Inside Out 2 (U)
- 7.45 Blink Twice (15 tbc)
- 1.30 Troubled Waters (Darlenniad Barddoniaeth /Poetry Reading)**

Sul 15 Sun

- 🕒 2.30 Despicable Me 4 (U)
- 5.00 8.00 Beetlejuice Beetlejuice (12A tbc)
- 🕒 2.00 **RB & O: The Marriage of Figaro**
- 7.00 Carving The Divine (tbc)
- 🕒 2.15 Beetlejuice Beetlejuice (12A tbc)
- 5.15 Inside Out 2 (U)
- 7.45 🕒 Blink Twice (15 tbc)

Llun 16 Mon

AR GAU | CLOSED

Maw 17 Tue

- 🕒 7.15 Beetlejuice Beetlejuice (12A tbc)
- 🕒 7.30 **Sherman: Iphigenia Yn Sblot**
- 🕒 7.45 Blink Twice (15 tbc)

Mer 18 Wed

- 🕒 7.15 Beetlejuice Beetlejuice (12A tbc)
- 🕒 7.00 **NT Live: Prima Facie (15)**
- 🕒 7.45 Blink Twice (15 tbc)

Iau 19 Thu

- 🕒 2.00 Carving The Divine (tbc)
- 7.15 Beetlejuice Beetlejuice (12A tbc)
- 🕒 7.00 **NT Live: Present Laughter**
- 🕒 7.45 Blink Twice (15 tbc)

Gwe 20 Fri

- 🕒 7.30 Wolfs (15 tbc)
- 🕒 7.15 Gaza (12A) + **Q&A**

- 🕒 7.00 The Trust Fall (15)

Sad 21 Sat

- 🕒 1.45 Kensuke's Kingdom (PG)
- 4.15 7.30 Wolfs (15 tbc)
- 🕒 2.00 **NT Live: Present Laughter**
- 6.00 Despicable Me 4 (U) 8.30 Gaza (12A)
- 🕒 1.15 Wolfs (15 tbc) 4.30 Inside Out 2 (U)
- 7.00 The Trust Fall (15)

Sul 22 Sun

- 🕒 1.30 Despicable Me 4 (U) 4.00 Gaza (12A)
- 6.45 🕒 Blackbird (15)
- 🕒 2.00 **Riverdance** 5.00 Inside Out 2 (U)
- 7.30 The Trust Fall (15)
- 🕒 1.15 4.30 7.45 Wolfs (15 tbc)
- 8.00 Nosweith Meic Agored**
- Open Mic Night**

Llun 23 Mon

AR GAU | CLOSED

Maw 24 Tue

- 🕒 7.30 Wolfs (15 tbc)
- 🕒 7.00 **Riverdance**
- 🕒 7.45 The Commandant's Shadow (12A)

Mer 25 Wed

- 🕒 7.30 🕒 Wolfs (15 tbc)
- 🕒 7.00 **Matthew Bourne's Edward Scissorhands**
- 🕒 7.45 The Commandant's Shadow (12A)

Iau 26 Thu

- 🕒 2.00 Gaza (12A) 7.30 Wolfs (15 tbc)
- 🕒 7.00 **NT Live: Prima Facie (15)**
- 🕒 7.45 The Commandant's Shadow (12A)

Gwe 27 Fri

- 🕒 7.30 Wolfs (15 tbc)
- 🕒 7.00 Lee (15)
- 🕒 7.15 The Outrun (15)

Sad 28 Sat

- 🕒 1.00 4.15 7.30 Wolfs (15 tbc)
- 🕒 2.00 **Matthew Bourne's Edward Scissorhands**
- 4.30 Despicable Me 4 (U) 7.00 Lee (15)
- 🕒 1.15 4.45 7.45 The Outrun (15)

Sul 29 Sun

- 🕒 1.00 4.15 7.30 Wolfs (15 tbc)
- 🕒 2.00 **Riverdance**
- 5.00 Despicable Me 4 (U) 7.15 Lee (15)
- 🕒 1.15 4.45 7.45 The Outrun (15)

Llun 30 Mon

AR GAU | CLOSED

HYDREF | OCTOBER

Maw 1 Tue

- 🕒 7.30 Wolfs (15 tbc)
- 🕒 7.00 🕒 Lee (15)
- 🕒 7.15 The Outrun (15)

Mer 2 Wed

- 🕒 7.00 Wolfs (15 tbc)
- 🕒 7.30 **Kiri Pritchard- Maclean**
- 🕒 6.45 The Outrun (15)

Iau 3 Thu

- 🕒 2.00 Lee (15) 7.00 Wolfs (15 tbc)
- 🕒 7.30 **Arán Agus Im**
- 🕒 6.45 The Outrun (15)

Gwe 4 Fri

- ① 6.45 The Outrun (15)
- ② 7.00 Speak No Evil (15)
- ③ 7.30 Joker (15 tbc)

8.00 Clwb Mwlidan: Sonic Sounds

Sad 5 Sat

- ① 1.30 Despicable Me 4 (U)
4.00 7.30 Joker (15 tbc)
- ② 1.15 Joker (15 tbc) 4.45 Lee (15)
7.45 Speak No Evil (15)
- ③ 2.00 5.00 8.00 The Outrun (15)

Sul 6 Sun

- ① 1.30 Despicable Me 4 (U)
4.00 7.30 Joker (15 tbc)
- ② 1.15 Joker (15 tbc) 4.45 Lee (15)
7.45 Speak No Evil (15)
- ③ 2.00 5.00 8.00 📺 The Outrun (15)

Llun 7 Mon

AR GAU | CLOSED

Maw 8 Tue

- ① 7.30 Joker (15 tbc)
- ② 7.00 📺 Speak No Evil (15)
- ③ 6.45 The Outrun (15)

Mer 9 Wed

- ① 7.30 Joker (15 tbc)
- ② 7.00 Speak No Evil (15)
- ③ 6.45 The Outrun (15)

Iau 10 Thu

- ① 2.00 The Outrun (15) 7.45 Joker (15 tbc)
- ② **7.30 Steve Knightley**
- ③ 6.45 The Outrun (15)

Gwe 11 Fri

- ① 7.45 Joker (15 tbc)
- ② 7.00 Twin Town (18) + Q&A
- ③ 7.30 Transformers One (PG tbc)

Sad 12 Sat

- ① 2.00 Transformers One (PG tbc)
4.45 8.15 Joker (15 tbc)
 - ② 2.15 Despicable Me 4 (U)
- #### 8.00 Mark Watson: Search
- ③ 1.30 Joker (15 tbc)
5.00 7.45 Transformers One (PG tbc)

Sul 13 Sun

- ① 2.30 8.15 Joker (15 tbc)
6.00 📺 Wilding (PG) + Q&A
- ② **7.30 We're Not Going Back**
- ③ 2.15 5.00 7.45 Transformers One (PG tbc)

Llun 14 Mon

AR GAU | CLOSED

Maw 15 Tue

- ① 7.30 Joker (15 tbc)
- ② **7.00 RB & O: Alice In Wonderland**
- ③ 6.45 Transformers One (PG tbc)

Mer 16 Wed

- ① 7.00 Joker (15 tbc)
- ② **7.30 Mugenkyo Taiko Drummers**
- ③ 6.45 Transformers One (PG tbc)

Iau 17 Thu

- ① **2.00 NT Live: Prima Facie (15)**
7.30 Joker (15 tbc)
- ② **7.00 Matthew Bourne's Edward Scissorhands**
- ③ 6.45 Transformers One (PG tbc)

Gwe 18 Fri

- ① 7.00 The Wild Robot (PG tbc)
- ② **7.30 The Dreamer - Live**
- ③ 6.45 Transformers One (PG tbc)

Sad 19 Sat

- ① 1.30 4.15 7.00 The Wild Robot (PG tbc)
- ② **7.30 Black Rat: The Three Musketeers**
- ③ 1.15 📺 4.00 6.45 Transformers One (PG tbc)

Sul 20 Sun

- ① 1.30 4.15 7.00 The Wild Robot (PG tbc)
 - ② **2.00 RB & O: Alice In Wonderland**
6.15 8.15 Wilding (PG)
 - ③ 1.15 4.00 6.45 📺 Transformers One (PG tbc)
- #### 8.00 Nosweith Meic Agored Open Mic Night

Llun 21 Mon

AR GAU | CLOSED

Maw 22 Tue

- ① 7.00 The Wild Robot (PG tbc)
- ② 7.30 Wilding (PG) + Q&A
- ③ 6.45 Transformers One (PG tbc)

Mer 23 Wed

- ① 7.00 The Wild Robot (PG tbc)
- ② 7.30 Wilding (PG) + Q&A
- ③ 6.45 Transformers One (PG tbc)

Iau 24 Thu

- ① 2.00 Wilding (PG) + Q&A
7.00 The Wild Robot (PG tbc)
- ② 7.30 Wilding (PG) + Q&A
- ③ 6.45 Transformers One (PG tbc)

Gwe 25 Fri

- 1 6.45 The Wild Robot (PG tbc)
- 2 7.15 5 Joker (15 tbc)
- 3 7.30 Salem's Lot (15 tbc)

Sad 26 Sat

- 1 1.30 4.15 The Wild Robot (PG tbc)
7.00 Kneecap (18)
- 2 2.30 Despicable Me 4 (U)
5.00 Wilding (PG) + Q&A 7.15 Joker (15 tbc)
- 3 2.15 Inside Out 2 (U)
4.45 Transformers One (PG tbc)
7.30 Salem's Lot (15 tbc)

Sul 27 Sun

- 1 1.30 4.15 The Wild Robot (PG tbc)
7.00 Kneecap (18)
- 2 1.45 Despicable Me 4 (U)
4.00 Wilding (PG) + Q&A
6.30 6 Driving Mum (12A)
- 3 2.15 Inside Out 2 (U)
4.45 Transformers One (PG tbc)
7.30 Salem's Lot (15 tbc)

Llun 28 Mon

- 1 1.30 4.15 5 The Wild Robot (PG tbc)
7.00 Kneecap (18)
- 2 AR GAU | CLOSED
- 3 2.00 Despicable Me 4 (U)
4.30 Transformers One (PG tbc)
7.15 Salem's Lot (15 tbc)

Maw 29 Tue

- 1 1.30 4.15 The Wild Robot (PG tbc)
7.00 Kneecap (18)
- 2 AR GAU | CLOSED
- 3 2.00 R Despicable Me 4 (U)
4.30 Transformers One (PG tbc)

7.15 5 Salem's Lot (15 tbc)

Mer 30 Wed

- 1 1.30 4.15 The Wild Robot (PG tbc)
7.00 Kneecap (18)
- 2 AR GAU | CLOSED
- 3 2.00 Despicable Me 4 (U)
4.30 Transformers One (PG tbc)
7.15 Salem's Lot (15 tbc)

Iau 31 Thu

- 1 1.30 4.15 The Wild Robot (PG tbc)
7.00 Kneecap (18)
- 2 Lleisiau Eraill Aberteifi |
Other Voices Cardigan
- 3 2.00 Despicable Me 4 (U)
4.30 Transformers One (PG tbc)
7.15 Salem's Lot (15 tbc)

TACHWEDD | NOVEMBER

Gwe 1 Fri

- 1 7.00 OVC Ffrwd Fyw / Live Stream
- 2 Lleisiau Eraill Aberteifi |
Other Voices Cardigan
- 3 2.00 4.45 7.30
Small Things Like These (tbc)

Sad 2 Sat

- 1 7.00 OVC Ffrwd Fyw / Live Stream
- 2 Lleisiau Eraill Aberteifi |
Other Voices Cardigan
- 3 2.00 4.45 7.30
Small Things Like These (tbc)

Sul 3 Sun

- 1 1.30 4.15 The Wild Robot (PG tbc)
7.00 Megalopolis (12A tbc)

- 2 AR GAU | CLOSED
- 3 2.00 4.45 7.30
Small Things Like These (tbc)

Llun 4 Mon

AR GAU | CLOSED

Maw 5 Tue

- 1 7.00 5 Megalopolis (12A tbc)
- 2 7.15 Joker (15 tbc)
- 3 7.30 Small Things Like These (tbc)

Mer 6 Wed

- 1 7.15 Megalopolis (12A tbc)
- 2 2.00 Van Gogh: Poets & Lovers EOS
- 3 7.30 5 Small Things Like These (tbc)

Iau 7 Thu

- 1 2.00 7.00 Megalopolis (12A tbc)
- 2 7.15 Joker (15 tbc)
- 3 7.30 Small Things Like These (tbc)

Gwe 8 Fri

- 1 7.15 Venom (15 tbc)
- 2 6.45 Paddington (PG tbc) (PG tbc)
- 3 7.30 Small Things Like These (tbc)

Sad 9 Sat

- 1 2.00 Van Gogh: Poets & Lovers EOS
4.15 Transformers One (PG tbc)
7.00 Venom (15 tbc)
- 2 1.15 4.00 6.45 Paddington (PG tbc)
1.45 4.45 7.30
- 3 Small Things Like These (tbc)

Sul 10 Sun

- 1 1.15 4.00 6.45 Paddington (PG tbc)
12.30 2.30 There's A Monster In My Show

Return Address
Theatr Mwldan
Bath House Road
Cardigan
Ceredigion
SA43 1JY



MWLDAN

SWYDDFA DOCYNNAU / BOX OFFICE

Dydd Mawrth - Dydd Sul
Tuesday - Sunday

12-8pm

01239 621 200

24/7: mwldan.co.uk



@theatrmwldan